

Basic Information

Product Name	Anti-TIMP2 Antibody	
Gene Name	TIMP2	
Source	Rabbit	
Clonality	Polyclonal	
Isotype	IgG	
Species Reactivity	human, mouse, rat	
Tested Application	IHC, ELISA	
Contents	500 ug/ml antibody with PBS, 0.02% NaN3, 1 mg/ml BSA and 50% glycerol.	
Immunogen	A synthetic peptide corresponding to a sequence at the C-terminus of human TIMP2, identical to the related mouse and rat sequences.	
Concentration	500 ug/ml	
Purification	Immunogen affinity purified.	
Dilution Ratios	Immunohistochemistry (IHC):	1:50-400
	Enzyme linked immunosorbent assay (ELISA):	1:100-1000
	(Boiling the paraffin sections in 10mM citrate buffer, pH6.0, or PH8.0 EDTA repair liquid for 20 mins is required for the staining of formalin/paraffin sections.) Optimal working dilutions must be determined by end user.	

Storage

12 months from date of receipt, -20°C as supplied.

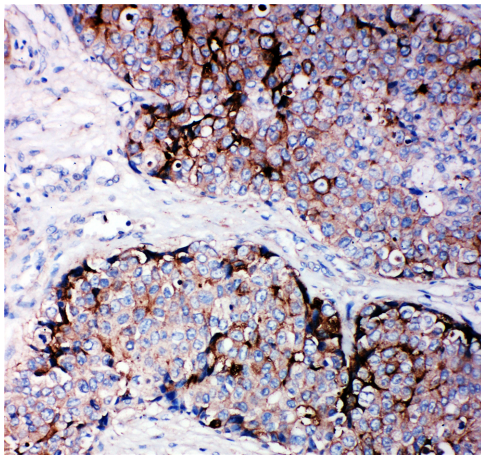
Background Information

TIMP metalloproteinase inhibitor 2, a tissue inhibitor of metalloproteinases, also known as TIMP2, is a human gene, thought to be a metastasis suppressor. This gene is a member of the TIMP gene family. The proteins encoded by this gene family are natural inhibitors of the matrix metalloproteinases, a group of peptidases involved in degradation of the extracellular matrix. In addition to an inhibitory role against metalloproteinases, the encoded protein has a unique role among TIMP family members in its ability to directly suppress the proliferation of endothelial cells. As a result, the encoded protein may be critical to the maintenance of tissue homeostasis by suppressing the proliferation of quiescent tissues in response to angiogenic factors, and by inhibiting protease activity in tissues undergoing remodelling of the extracellular matrix.

Reference

Anti-TIMP2 Antibody被引用在14文献中。

Selected Validation Data



IHC analysis of TIMP2 using anti-TIMP2 antibody (BA0576). TIMP2 was detected in a paraffin-embedded section of human mammary cancer tissue. The tissue section was incubated with rabbit anti-TIMP2 Antibody (BA0576) at a dilution of 1:200 and developed using HRP Conjugated Rabbit IgG Super Vision Assay Kit (Catalog # SV0002) with DAB (Catalog # AR1027) as the chromogen.