

Basic Information

Product Name	Anti-TIMP3 Antibody
Gene Name	TIMP3
Source	Rabbit
Clonality	Polyclonal
Isotype	IgG
Species Reactivity	human, mouse, rat
Tested Application	WB, ELISA
Contents	500 ug/ml antibody with PBS, 0.02% NaN ₃ , 1 mg/ml BSA and 50% glycerol.
Immunogen	A synthetic peptide corresponding to a sequence at the C-terminus of human TIMP3, different from the related rat and mouse sequences by one amino acid.
Concentration	500 ug/ml
Purification	Immunogen affinity purified.
Observed MW	24 kDa
Dilution Ratios	Western blot (WB): 1:500-2000 Enzyme linked immunosorbent assay (ELISA):1:100-1000

Storage

12 months from date of receipt, -20°C as supplied.

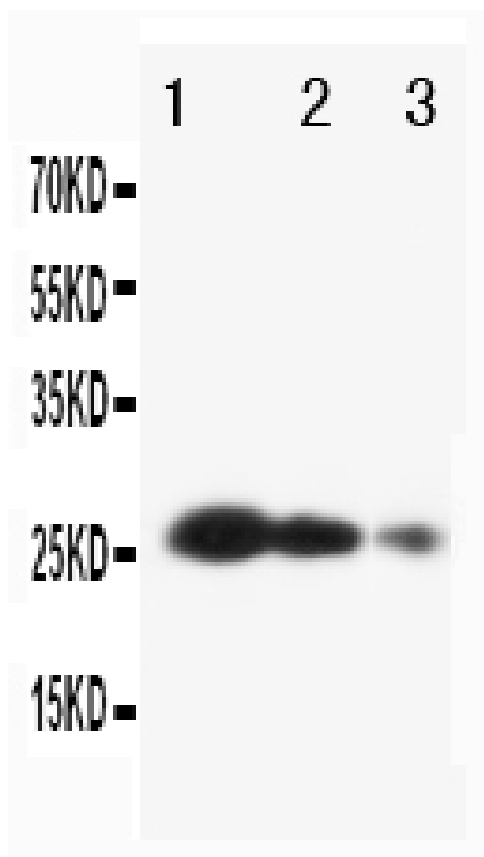
Background Information

Metalloproteinase inhibitor 3 is a protein that in humans is encoded by the TIMP3 gene. It is mapped to 22q12.1-q13.2. This gene belongs to the tissue inhibitor of metalloproteinases gene family. The proteins encoded by this gene family are inhibitors of the matrix metalloproteinases, a group of peptidases involved in degradation of the extracellular matrix (ECM). Expression of this gene is induced in response to mitogenic stimulation and this netrin domain-containing protein is localized to the ECM. Mutations in this gene have been associated with the autosomal dominant disorder Sorsby's fundus dystrophy.

Reference

Anti-TIMP3 Antibody被引用在1文献中。

Selected Validation Data



Western blot analysis of TIMP3 using anti-TIMP3 antibody (BA0577-2).

Lane 1: recombinant human TIMP3 protein 10ng,

Lane 2: recombinant human TIMP3 protein 5ng,

Lane 3: recombinant human TIMP3 protein 2.5ng.

After electrophoresis, proteins were transferred to a membrane.

Then the membrane was incubated with rabbit anti-TIMP3 antigen

affinity purified polyclonal antibody (BA0577-2) at a dilution of

1:1000 and probed with a goat anti-rabbit IgG-HRP secondary

antibody (Catalog # BA1054). The signal is developed using ECL Plus

Western Blotting Substrate (Catalog # AR1197). A specific band was

detected for TIMP3 at approximately 24 kDa.