

Basic Information

| | |
|--------------------|--|
| Product Name | Anti-HO-1/HMOX1 Antibody |
| Gene Name | HMOX1 |
| Source | Rabbit |
| Clonality | Polyclonal |
| Isotype | IgG |
| Species Reactivity | human, mouse, rat |
| Tested Application | IHC |
| Contents | 500 ug/ml antibody with PBS, 0.02% NaN ₃ , 1 mg/ml BSA and 50% glycerol. |
| Immunogen | Polypeptide |
| Concentration | 500 ug/ml |
| Purification | Immunogen affinity purified. |
| Dilution Ratios | Immunohistochemistry (IHC): 1:50-400 (Boiling the paraffin sections in 10mM citrate buffer,pH6.0,or PH8.0 EDTA repair liquid for 20 mins is required for the staining of formalin/paraffin sections.) Optimal working dilutions must be determined by end user. |

Storage

12 months from date of receipt, -20°C as supplied. 6 months 2 to 8°C after reconstitution. Avoid repeated freezing and thawing.

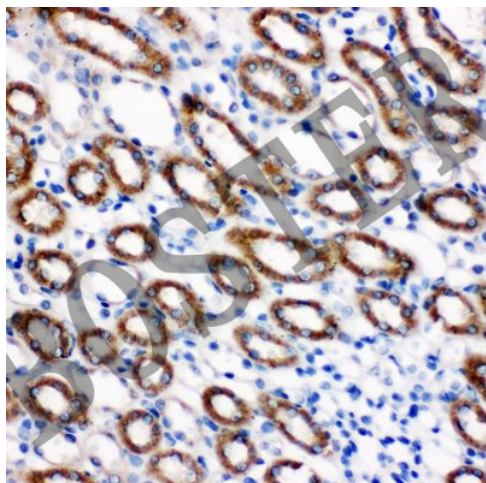
Background Information

Heme oxygenase, an essential enzyme in heme catabolism, cleaves heme to form biliverdin, which is subsequently converted to bilirubin by biliverdin reductase, and carbon monoxide, a putative neurotransmitter. Heme oxygenase activity is induced by its substrate heme and by various nonheme substances. Heme oxygenase occurs as 2 isozymes, an inducible heme oxygenase-1 and a constitutive heme oxygenase-2. HMOX1 and HMOX2 belong to the heme oxygenase family.

Reference

Anti-HO-1/HMOX1 Antibody被引用在20文献中。

Selected Validation Data



IHC analysis of HO-1/HMOX1 using anti-HO-1/HMOX1 antibody (BA0605-1).

HO-1/HMOX1 was detected in a paraffin-embedded section of rat kidney tissue. Biotinylated goat anti-rabbit IgG was used as secondary antibody. The tissue section was incubated with rabbit anti-HO-1/HMOX1 Antibody (BA0605-1) at a dilution of 1:200 and developed using Streptavidin-Biotin-Complex (SABC) (Catalog # SA1022) with DAB (Catalog # AR1027) as the chromogen.