

## Basic Information

Product Name	Anti-P-Selectin/SELP Antibody	
Gene Name	Selp	
Source	Rabbit	
Clonality	Polyclonal	
Isotype	IgG	
Species Reactivity	human, mouse, rat, rabbit	
Tested Application	WB, IHC	
Contents	500 ug/ml antibody with PBS, 0.02% NaN <sub>3</sub> , 1 mg/ml BSA and 50% glycerol.	
Immunogen	E. coli-derived mouse CD62P recombinant protein (Position: W42-A267).	
Concentration	500 ug/ml	
Purification	Immunogen affinity purified.	
Observed MW	140 kDa	
Dilution Ratios	Western blot (WB): 1:500-2000 Immunohistochemistry (IHC): 1:50-400 (Boiling the paraffin sections in 10mM citrate buffer, pH6.0, or PH8.0 EDTA repair liquid for 20 mins is required for the staining of formalin/paraffin sections.) Optimal working dilutions must be determined by end user.	

## Storage

12 months from date of receipt, -20°C as supplied.

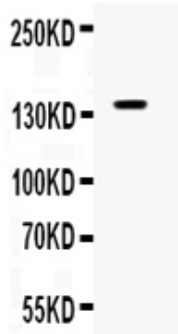
## Background Information

CD62P is also known as SELP or P-selectin. This gene encodes a 140 kDa protein that is stored in the alpha-granules of platelets and Weibel-Palade bodies of endothelial cells. This protein redistributes to the plasma membrane during platelet activation and degranulation and mediates the interaction of activated endothelial cells or platelets with leukocytes. The membrane protein is a calcium-dependent receptor that binds to sialylated forms of Lewis blood group carbohydrate antigens on neutrophils and monocytes. Alternative splice variants may occur but are not well documented.

## Reference

Anti-P-Selectin/SELP Antibody被引用在5文献中。

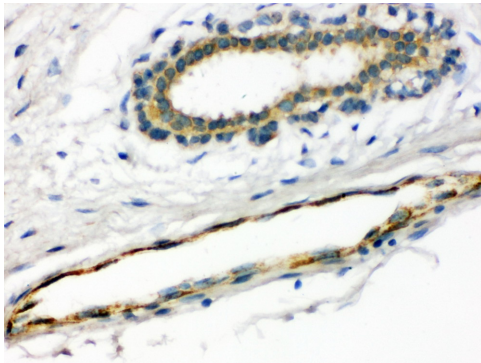
## Selected Validation Data



Western blot analysis of P-Selectin/SELP using anti-P-Selectin/SELP antibody (BA0617). The sample well of each lane was loaded with 30 ug of sample under reducing conditions.

Lane 1: human PANC whole cell lysates.

After electrophoresis, proteins were transferred to a membrane. Then the membrane was incubated with rabbit anti-P-Selectin/SELP antigen affinity purified polyclonal antibody (BA0617) at a dilution of 1:1000 and probed with a goat anti-rabbit IgG-HRP secondary antibody (Catalog # BA1054). The signal is developed using ECL Plus Western Blotting Substrate (Catalog # AR1197). A specific band was detected for P-Selectin/SELP at approximately 140 kDa. The expected band size for P-Selectin/SELP is at 83 kDa.



IHC analysis of P-Selectin/SELP using anti-P-Selectin/SELP antibody (BA0617).

P-Selectin/SELP was detected in a paraffin-embedded section of human breast cancer tissue. Biotinylated goat anti-rabbit IgG was used as secondary antibody. The tissue section was incubated with rabbit anti-P-Selectin/SELP Antibody (BA0617) at a dilution of 1:200 and developed using Streptavidin-Biotin-Complex (SABC) (Catalog # SA1022) with DAB (Catalog # AR1027) as the chromogen.