

Basic Information

Product Name	Anti-ALPL Antibody	
Gene Name	ALPL	
Source	Rabbit	
Clonality	Polyclonal	
Isotype	IgG	
Species Reactivity	human	
Tested Application	WB, IHC	
Contents	500 ug/ml antibody with PBS, 0.02% NaN ₃ , 1 mg/ml BSA and 50% glycerol.	
Immunogen	A synthetic peptide corresponding to a sequence at the N-terminus of rat Alkaline Phosphatase, different from the related mouse sequence by one amino acid.	
Concentration	500 ug/ml	
Purification	Immunogen affinity purified.	
Observed MW	80 kDa	
Dilution Ratios	Western blot (WB): 1:500-2000 Immunohistochemistry (IHC): 1:50-400 (Boiling the paraffin sections in 10mM citrate buffer, pH6.0, or PH8.0 EDTA repair liquid for 20 mins is required for the staining of formalin/paraffin sections.) Optimal working dilutions must be determined by end user.	

Storage

12 months from date of receipt, -20°C as supplied.

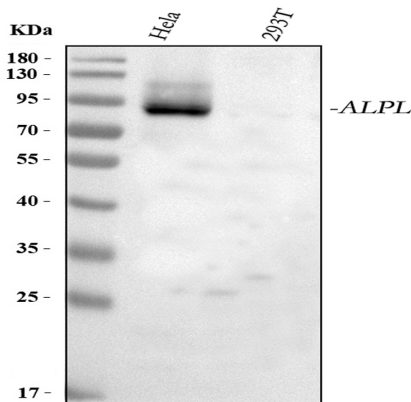
Background Information

Alkaline phosphatase, tissue-nonspecific isozyme is an enzyme that in humans is encoded by the ALPL gene. There are at least four distinct but related alkaline phosphatases: intestinal, placental, placental-like, and liver/bone/kidney(tissue non-specific). The first three are located together on chromosome 2 while the tissue non-specific form is located on chromosome 1. Liver/bone/kidney alkaline phosphatase, also known as tissue-nonspecific alkaline phosphatase, acts physiologically as a lipid-anchored phosphoethanolamine(PEA) and pyridoxal-5-prime-phosphate(PLP) ectophosphatase. Mice that lack a functional form of this enzyme show normal skeletal development. This enzyme has been linked directly to a disorder known as hypophosphatasia, a disorder that is characterized by hypercalcemia and includes skeletal defects.

Reference

Anti-ALPL Antibody被引用在5文献中。

Selected Validation Data

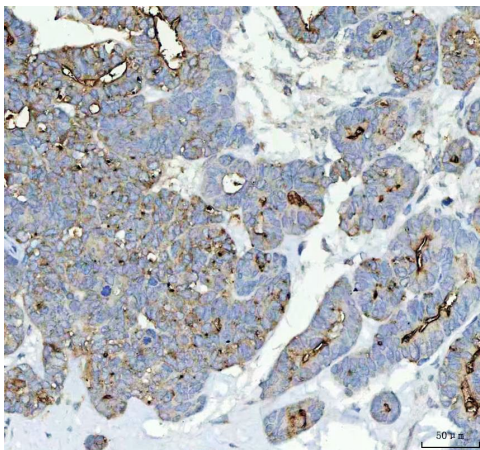


Western blot analysis of ALPL using anti-ALPL antibody (BA0632). The sample well of each lane was loaded with 30 ug of sample under reducing conditions.

Lane 1: human Hela whole cell lysates,

Lane 2: human 293T whole cell lysates,

After electrophoresis, proteins were transferred to a membrane. Then the membrane was incubated with rabbit anti-ALPL antigen affinity purified polyclonal antibody (BA0632) at a dilution of 1:1000 and probed with a goat anti-rabbit IgG-HRP secondary antibody (Catalog # BA1054). The signal is developed using ECL Plus Western Blotting Substrate (Catalog # AR1197). A specific band was detected for ALPL at approximately 80 kDa. The expected band size for ALPL is at 57 kDa.



IHC analysis of ALPL using anti-ALPL antibody (BA0632) .

ALPL was detected in a paraffin-embedded section of human parotid acinar cell carcinoma tissue. The tissue section was incubated with rabbit anti-ALPL Antibody (BA0632) at a dilution of 1:200 and developed using HRP Conjugated Rabbit IgG Super Vision Assay Kit (Catalog # SV0002) with DAB (Catalog # AR1027) as the chromogen.