

Basic Information

Product Name	Anti-Annexin A2/ANXA2 Antibody	
Gene Name	ANXA2	
Source	Rabbit	
Clonality	Polyclonal	
Isotype	IgG	
Species Reactivity	human, mouse, rat	
Tested Application	WB, IHC	
Contents	500 ug/ml antibody with PBS, 0.02% NaN ₃ , 1 mg/ml BSA and 50% glycerol.	
Immunogen	A synthetic peptide corresponding to a sequence in the middle region of human Annexin A2, different from the rat sequence by one amino acid.	
Concentration	500 ug/ml	
Purification	Immunogen affinity purified.	
Observed MW	36 kDa	
Dilution Ratios	Western blot (WB): 1:500-2000 Immunohistochemistry (IHC): 1:50-400 (Boiling the paraffin sections in 10mM citrate buffer, pH6.0, or PH8.0 EDTA repair liquid for 20 mins is required for the staining of formalin/paraffin sections.) Optimal working dilutions must be determined by end user.	

Storage

12 months from date of receipt, -20°C as supplied. 6 months 2 to 8°C after reconstitution. Avoid repeated freezing and thawing.

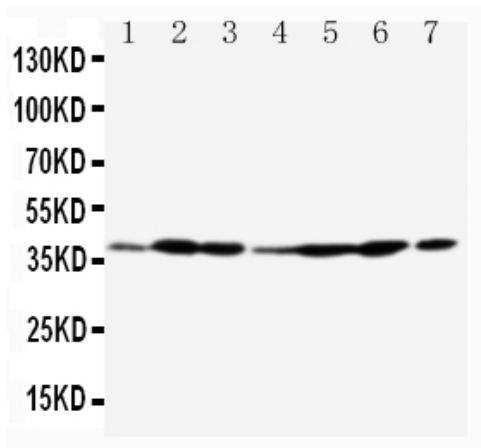
Background Information

Annexin A2 also known as annexin II is a protein that in humans is encoded by the ANXA2 gene. The ANXA2 gene has three pseudogenes located on chromosomes 4, 9 and 10, respectively. Multiple alternatively spliced transcript variants encoding different isoforms have been found for this gene. This protein is a member of the annexin family. Members of this calcium-dependent phospholipid-binding protein family play a role in the regulation of cellular growth and in signal transduction pathways. This protein functions as an autocrine factor which heightens osteoclast formation and bone resorption. Richard et al.(1994) presented an integration of the physical, expression, and genetic maps of human chromosome 15. They placed the ANXA2 gene in their region IV, i.e., 15q21-q22, thus confirming the previous localization.

Reference

Anti-Annexin A2/ANXA2 Antibody被引用在1文献中。

Selected Validation Data



Western blot analysis of Annexin A2/ANXA2 using anti-Annexin A2/ANXA2 antibody (BA0641). The sample well of each lane was loaded with 30 ug of sample under reducing conditions.

Lane 1: rat testis tissue lysates,

Lane 2: rat lung tissue lysates,

Lane 3: rat ovary tissue lysates,

Lane 4: human MCF-7 whole cell lysates,

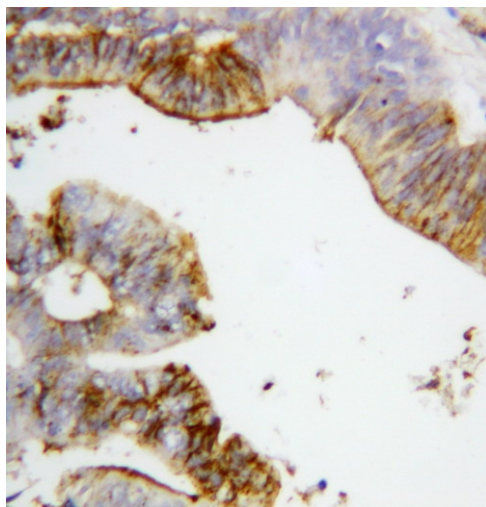
Lane 5: human SMMC whole cell lysates,

Lane 6: human A549 whole cell lysates,

Lane 7: human Jurkat whole cell lysates.

After electrophoresis, proteins were transferred to a membrane.

Then the membrane was incubated with rabbit anti-Annexin A2/ANXA2 antigen affinity purified polyclonal antibody (BA0641) at a dilution of 1:1000 and probed with a goat anti-rabbit IgG-HRP secondary antibody (Catalog # BA1054). The signal is developed using ECL Plus Western Blotting Substrate (Catalog # AR1197). A specific band was detected for Annexin A2/ANXA2 at approximately 36 kDa. The expected band size for Annexin A2/ANXA2 is at 39 kDa.



IHC analysis of Annexin A2/ANXA2 using anti-Annexin A2/ANXA2 antibody (BA0641) .

Annexin A2/ANXA2 was detected in a paraffin-embedded section of human intestinal tissue. The tissue section was incubated with rabbit anti-Annexin A2/ANXA2 Antibody (BA0641) at a dilution of 1:200 and developed using HRP Conjugated Rabbit IgG Super Vision Assay Kit (Catalog # SV0002) with DAB (Catalog # AR1027) as the chromogen.