

Basic Information

Product Name	Anti-CEA/CEACAM5 Antibody	
Gene Name	CEACAM5	
Source	Rabbit	
Clonality	Polyclonal	
Isotype	IgG	
Species Reactivity	human	
Tested Application	WB, IHC, ELISA	
Contents	500 ug/ml antibody with PBS, 0.02% NaN3, 1 mg/ml BSA and 50% glycerol.	
Immunogen	Insect cells-derived human CEA recombinant protein(Position: full).	
Concentration	500 ug/ml	
Purification	Immunogen affinity purified.	
Observed MW	130-200 kDa	
Dilution Ratios	Western blot (WB):	1:500-2000
	Immunohistochemistry (IHC):	1:50-400
	Enzyme linked immunosorbent assay (ELISA):	1:100-1000
	(Boiling the paraffin sections in 10mM citrate buffer,pH6.0,or PH8.0 EDTA repair liquid for 20 mins is required for the staining of formalin/paraffin sections.) Optimal working dilutions must be determined by end user.	

Storage

12 months from date of receipt, -20°C as supplied.

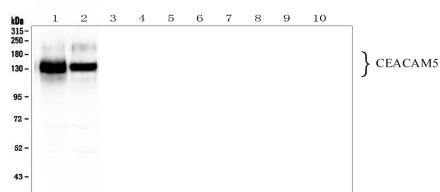
Background Information

CEA(Carcinoembryonic antigen) is a glycoprotein involved in cell adhesion. It is normally produced during fetal development, but the production of CEA stops before birth. Therefore, it is not usually present in the blood of healthy adults, although levels are raised in heavy smokers. CEA is a glycosyl phosphatidyl inositol(GPI)-cell surface anchored glycoprotein whose specialized sialofucosylated glycoforms serve as functional colon carcinoma L-selectin and E-selectin ligands, which may be critical to the metastatic dissemination of colon carcinoma cells. CEA and related genes make up the CEA family belonging to the immunoglobulin superfamily. In humans, the carcinoembryonic antigen family consists of 29 genes, 18 of which are normally expressed.

Reference

Anti-CEA/CEACAM5 Antibody 被引用在1文献中。

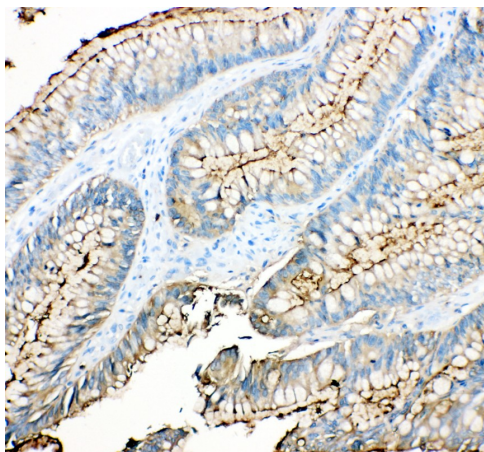
Selected Validation Data



Western blot analysis of CEA/CEACAM5 using anti-CEA/CEACAM5 antibody (BA10024). The sample well of each lane was loaded with 30 ug of sample under reducing conditions.

Lane 1: human SW620 whole cell lysates,
Lane 2: human Caco-2 whole cell lysates,
Lane 3: mouse small intestine tissue lysates,
Lane 4: mouse stomach tissue lysates,
Lane 5: mouse lung tissue lysates,
Lane 6: mouse liver tissue lysates,
Lane 7: mouse NIH/3T3 whole cell lysates,
Lane 8: mouse HEPA1-6 whole cell lysates,
Lane 9: mouse SP20 whole cell lysates,
Lane 10: rat RH35 whole cell lysates.

After electrophoresis, proteins were transferred to a membrane. Then the membrane was incubated with rabbit anti-CEA/CEACAM5 antigen affinity purified polyclonal antibody (BA10024) at a dilution of 1:1000 and probed with a goat anti-rabbit IgG-HRP secondary antibody (Catalog # BA1054). The signal is developed using ECL Plus Western Blotting Substrate (Catalog # AR1197). A specific band was detected for CEA/CEACAM5 at approximately 130-200 kDa. The expected band size for CEA/CEACAM5 is at 77 kDa.



IHC analysis of CEA/CEACAM5 using anti-CEA/CEACAM5 antibody (BA10024) .

CEA/CEACAM5 was detected in a paraffin-embedded section of human colon cancer tissue. The tissue section was incubated with rabbit anti-CEA/CEACAM5 Antibody (BA10024) at a dilution of 1:200 and developed using HRP Conjugated Rabbit IgG Super Vision Assay Kit (Catalog # SV0002) with DAB (Catalog # AR1027) as the chromogen.