

## Basic Information

Product Name	Anti-LEPR (长亚型) Antibody	
Gene Name	LEPR	
Source	Rabbit	
Clonality	Polyclonal	
Isotype	IgG	
Species Reactivity	human, mouse, rat	
Tested Application	WB, IHC	
Contents	500 ug/ml antibody with PBS, 0.02% NaN <sub>3</sub> , 1 mg/ml BSA and 50% glycerol.	
Immunogen	Polypeptide	
Concentration	500 ug/ml	
Purification	Immunogen affinity purified.	
Observed MW	132 kDa	
Dilution Ratios	Western blot (WB): 1:500-2000 Immunohistochemistry (IHC): 1:50-400 (Boiling the paraffin sections in 10mM citrate buffer, pH6.0, or PH8.0 EDTA repair liquid for 20 mins is required for the staining of formalin/paraffin sections.) Optimal working dilutions must be determined by end user.	

## Storage

12 months from date of receipt, -20°C as supplied.

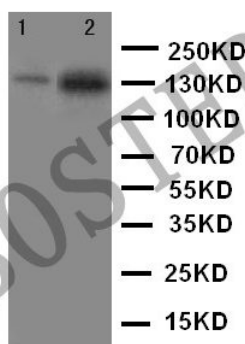
## Background Information

The protein encoded by this gene belongs to the gp130 family of cytokine receptors that are known to stimulate gene transcription via activation of cytosolic STAT proteins. This protein is a receptor for leptin (an adipocyte-specific hormone that regulates body weight), and is involved in the regulation of fat metabolism, as well as in a novel hematopoietic pathway that is required for normal lymphopoiesis. Mutations in this gene have been associated with obesity and pituitary dysfunction. Alternatively spliced transcript variants encoding different isoforms have been described for this gene. It is noteworthy that this gene and LEPROT gene (GeneID:54741) share the same promoter and the first 2 exons, however, encode distinct proteins (PMID:9207021).

## Reference

Anti-LEPR (长亚型) Antibody被引用在5文献中。

## Selected Validation Data



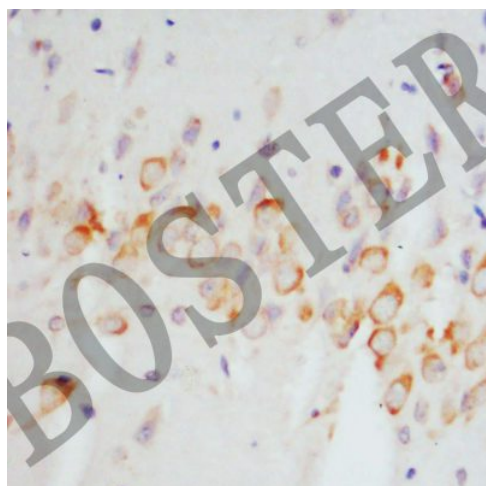
Western blot analysis of LEPR (长亚型) using anti-LEPR (长亚型) antibody (BA1234). The sample well of each lane was loaded with 30 ug of sample under reducing conditions.

Lane 1: rat cardiac muscle tissue lysates,

Lane 2: human SMMC whole cell lysates.

After electrophoresis, proteins were transferred to a membrane.

Then the membrane was incubated with rabbit anti-LEPR (长亚型) antigen affinity purified polyclonal antibody (BA1234) at a dilution of 1:1000 and probed with a goat anti-rabbit IgG-HRP secondary antibody (Catalog # BA1054). The signal is developed using ECL Plus Western Blotting Substrate (Catalog # AR1197). A specific band was detected for LEPR (长亚型) at approximately 132 kDa. The expected band size for LEPR (长亚型) is at 132 kDa.



IHC analysis of LEPR (长亚型) using anti-LEPR (长亚型) antibody (BA1234).

LEPR (长亚型) was detected in a paraffin-embedded section of rat brain tissue. The tissue section was incubated with rabbit anti-LEPR (长亚型) Antibody (BA1234) at a dilution of 1:200 and developed using HRP Conjugated Rabbit IgG Super Vision Assay Kit (Catalog # SV0002) with DAB (Catalog # AR1027) as the chromogen.