

Basic Information

Product Name	Anti-IFN Gamma/IFNG Antibody	
Gene Name	IFNG	
Source	Rabbit	
Clonality	Polyclonal	
Isotype	IgG	
Species Reactivity	human	
Tested Application	WB, IHC, ELISA	
Contents	500 ug/ml antibody with PBS, 0.02% NaN ₃ , 1 mg/ml BSA and 50% glycerol.	
Immunogen	E. coli-derived human IFN gamma recombinant protein(Position: Q24-Q166).	
Concentration	500 ug/ml	
Purification	Immunogen affinity purified.	
Observed MW	19 kDa	
Dilution Ratios	Western blot (WB): 1:500-2000 Immunohistochemistry (IHC): 1:50-400 Enzyme linked immunosorbent assay (ELISA): 1:100-1000 (Boiling the paraffin sections in 10mM citrate buffer,pH6.0,or PH8.0 EDTA repair liquid for 20 mins is required for the staining of formalin/paraffin sections.) Optimal working dilutions must be determined by end user.	

Storage

12 months from date of receipt, -20°C as supplied.

Background Information

Interferon-gamma(IFN-gamma) is an inflammatory cytokine that has been implicated in the development of fibrosis in inflamed tissues. The production of IFN-gamma, which is under genetic control, can influence the development of fibrosis in lung allografts. IFN-gamma is also produced by natural killer(NK) cells and most prominently by CD8 cytotoxic T cells, and is vital for the control of microbial pathogens. Interferon gamma is believed to be crucial for host defence against many infections. Genetically determined variability in IFN-gamma and expression might be important for the development of tuberculosis. IFN-gamma activates human macrophage oxidative metabolism and antimicrobial activity. In addition to having antiviral activity, IFN-gamma has important immunoregulatory functions. IFN-gamma plays an important role in the control of neointima proliferation.

Reference

Anti-IFN Gamma/IFNG Antibody被引用在4文献中。

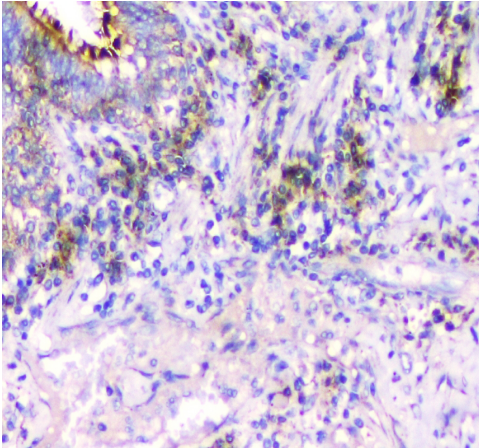
Selected Validation Data



Western blot analysis of IFN Gamma/IFNG using anti-IFN Gamma/IFNG antibody (BA14299).

Lane 1: recombinant human IFN Gamma/IFNG protein 0.5 ng.

After electrophoresis, proteins were transferred to a membrane. Then the membrane was incubated with rabbit anti-IFN Gamma/IFNG antigen affinity purified polyclonal antibody (BA14299) at a dilution of 1:1000 and probed with a goat anti-rabbit IgG-HRP secondary antibody (Catalog # BA1054). The signal is developed using ECL Plus Western Blotting Substrate (Catalog # AR1197). A specific band was detected for IFN Gamma/IFNG at approximately 17 kDa.



IHC analysis of IFN Gamma/IFNG using anti-IFN Gamma/IFNG antibody (BA14299) .

IFN Gamma/IFNG was detected in a paraffin-embedded section of human lung cancer tissue. The tissue section was incubated with rabbit anti-IFN Gamma/IFNG Antibody (BA14299) at a dilution of 1:200 and developed using HRP Conjugated Rabbit IgG Super Vision Assay Kit (Catalog # SV0002) with DAB (Catalog # AR1027) as the chromogen.