

Basic Information

Product Name	Anti-CXCL1 Antibody
Gene Name	CXCL1
Source	Rabbit
Clonality	Polyclonal
Isotype	IgG
Species Reactivity	human
Tested Application	WB
Contents	500 ug/ml antibody with PBS, 0.02% NaN ₃ , 1 mg/ml BSA and 50% glycerol.
Immunogen	A synthetic peptide corresponding to a sequence at the C-terminus of human GRO alpha.
Concentration	500 ug/ml
Purification	Immunogen affinity purified.
Observed MW	11 kDa
Dilution Ratios	Western blot (WB):1:500-2000

Storage

12 months from date of receipt, -20°C as supplied.

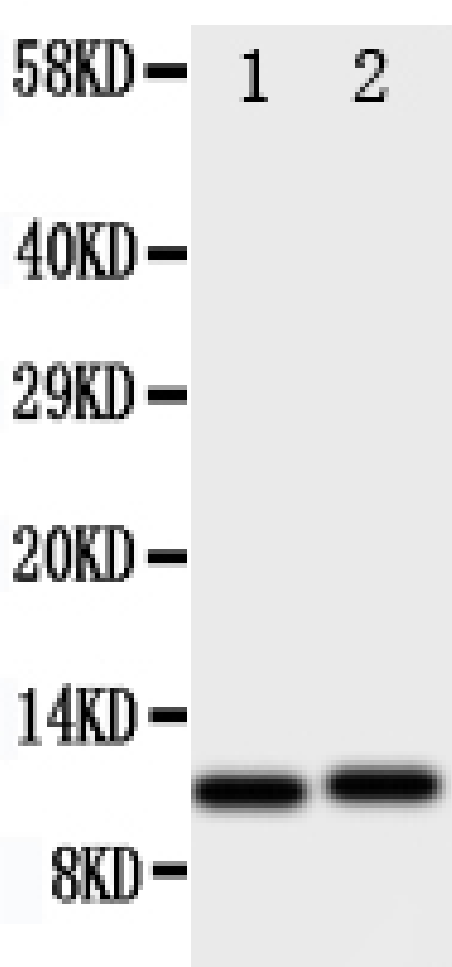
Background Information

CXCL1(Chemokine, CXC motif, Ligand 1), also called GRO1, SCYB1, GROA or MGSA, is a small cytokine belonging to the CXC chemokine family that was previously called GRO1 oncogene, GROalpha, KC, Neutrophil-activating protein 3(NAP-3) and melanoma growth stimulating activity, alpha(MSGA-alpha). In humans, this protein is encoded by the CXCL1 gene. The CXCL1 gene is mapped on 4q13.3. CXCL1 is secreted by human melanoma cells, has mitogenic properties and is implicated in melanoma pathogenesis. CXCL1 is expressed by macrophages, neutrophils and epithelial cells, and has neutrophil chemoattractant activity. CXCL1 plays a role in spinal cord development by inhibiting the migration of oligodendrocyte precursors and is involved in the processes of angiogenesis, inflammation, wound healing, and tumorigenesis. Signaling through Cxcr2, Cxcl1 inhibited oligodendrocyte precursor migration. The migrational arrest was rapid, reversible, and concentration dependent, and it reflected enhanced cell/substrate interactions. White matter expression of Cxcl1 was temporospatially regulated. Others contribute to aggressive growth selectivity in the lung. Among the lung metastasis signature genes identified, several, including CXCL1, were functionally validated.

Reference

Anti-CXCL1 Antibody 被引用在5文献中。

Selected Validation Data



Western blot analysis of CXCL1 using anti-CXCL1 antibody

(BA1471-2). The sample well of each lane was loaded with 30 ug of sample under reducing conditions.

Lane 1: HELA whole cell lysates,

Lane 2: JURKAT whole cell lysates.

After electrophoresis, proteins were transferred to a membrane.

Then the membrane was incubated with rabbit anti-CXCL1 antigen

affinity purified polyclonal antibody (BA1471-2) at a dilution of

1:1000 and probed with a goat anti-rabbit IgG-HRP secondary antibody (Catalog # BA1054). The signal is developed using ECL Plus

Western Blotting Substrate (Catalog # AR1197). A specific band was

detected for CXCL1 at approximately 11 kDa. The expected band size for CXCL1 is at 11 kDa.