

Basic Information

Product Name	Anti-NPY1R Antibody	
Gene Name	NPY1R	
Source	Rabbit	
Clonality	Polyclonal	
Isotype	IgG	
Species Reactivity	human, mouse, rat	
Tested Application	WB, IHC	
Contents	500 ug/ml antibody with PBS, 0.02% NaN ₃ , 1 mg/ml BSA and 50% glycerol.	
Immunogen	A synthetic peptide corresponding to a sequence at the C-terminus of human NPY1R, identical to the related rat and mouse sequences.	
Concentration	500 ug/ml	
Purification	Immunogen affinity purified.	
Observed MW	44 kDa	
Dilution Ratios	Western blot (WB): 1:500-2000 Immunohistochemistry (IHC): 1:50-400 (Boiling the paraffin sections in 10mM citrate buffer,pH6.0,or PH8.0 EDTA repair liquid for 20 mins is required for the staining of formalin/paraffin sections.) Optimal working dilutions must be determined by end user.	

Storage

12 months from date of receipt, -20°C as supplied.

Background Information

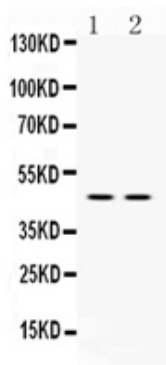
NPY1R, Neuropeptide Y receptor Y1, is a protein that in humans is encoded by the NPY1R gene. NPY receptor is a member of the G protein-coupled receptor superfamily. The NPY Y1 receptor gene has 3 exons. By high resolution fluorescence in situ hybridization, the NPY1R gene is localized to chromosome 4q31.3-q32. NPY is one of the most abundant neuropeptides in the mammalian nervous system and exhibits a diverse range of important physiologic activities, including effects on psychomotor activity, food intake, regulation of central endocrine secretion, and potent vasoactive effects on the cardiovascular system. Two major subtypes of NPY(Y1 and Y2) have been defined by pharmacologic criteria. NPY receptors have been identified in a variety of tissues, including brain, spleen, small

intestine, kidney, testis, placenta, and aortic smooth muscle.

Reference

Anti-NPY1R Antibody被引用在1文献中。

Selected Validation Data

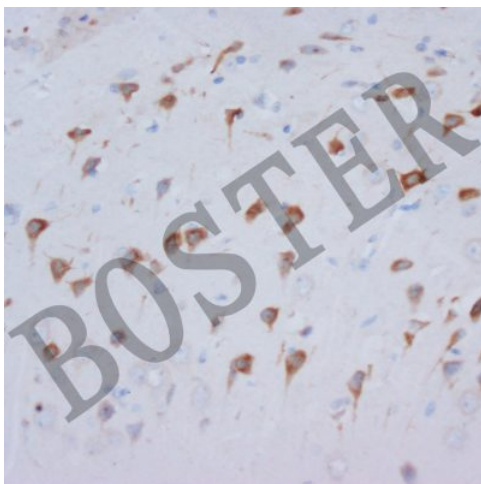


Western blot analysis of NPY1R using anti-NPY1R antibody (BA2109). The sample well of each lane was loaded with 30 ug of sample under reducing conditions.

Lane 1: human U87 whole cell lysates,

Lane 2: human SMMC whole cell lysates.

After electrophoresis, proteins were transferred to a membrane. Then the membrane was incubated with rabbit anti-NPY1R antigen affinity purified polyclonal antibody (BA2109) at a dilution of 1:1000 and probed with a goat anti-rabbit IgG-HRP secondary antibody (Catalog # BA1054). The signal is developed using ECL Plus Western Blotting Substrate (Catalog # AR1197). A specific band was detected for NPY1R at approximately 44 kDa. The expected band size for NPY1R is at 44 kDa.



IHC analysis of NPY1R using anti-NPY1R antibody (BA2109).

NPY1R was detected in a paraffin-embedded section of rat brain tissue. Biotinylated goat anti-rabbit IgG was used as secondary antibody. The tissue section was incubated with rabbit anti-NPY1R Antibody (BA2109) at a dilution of 1:200 and developed using Streptavidin-Biotin-Complex (SABC) (Catalog # SA1022) with DAB (Catalog # AR1027) as the chromogen.