

## Basic Information

Product Name	Anti-LIV-1/ZIP6/SLC39A6 Antibody
Gene Name	SLC39A6
Source	Rabbit
Clonality	Polyclonal
Isotype	IgG
Species Reactivity	human, mouse, rat
Tested Application	IHC
Contents	500 ug/ml antibody with PBS, 0.02% NaN <sub>3</sub> , 1 mg/ml BSA and 50% glycerol.
Immunogen	Polypeptide
Concentration	500 ug/ml
Purification	Immunogen affinity purified.
Dilution Ratios	Immunohistochemistry in paraffin section IHC-(P): 1:50-400 (Boiling the paraffin sections in 10mM citrate buffer,pH6.0,or PH8.0 EDTA repair liquid for 20 mins is required for the staining of formalin/paraffin sections.) Optimal working dilutions must be determined by end user.

## Storage

12 months from date of receipt, -20°C as supplied.

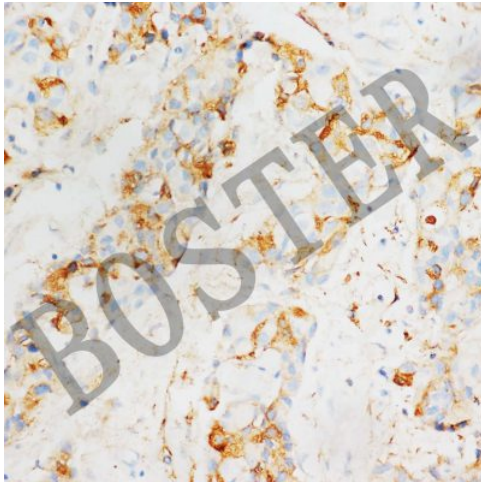
## Background Information

Zinc is an essential cofactor for hundreds of enzymes. It is involved in protein, nucleic acid, carbohydrate, and lipid metabolism, as well as in the control of gene transcription, growth, development, and differentiation. SLC39A6 belongs to a subfamily of proteins that show structural characteristics of zinc transporters (Taylor and Nicholson, 2003 [PubMed 12659941]).

## Reference

Anti-LIV-1/ZIP6/SLC39A6 Antibody被引用在1文献中。

## Selected Validation Data



IHC analysis of LIV-1/ZIP6/SLC39A6 using anti-LIV-1/ZIP6/SLC39A6 antibody (BA2309-1).

LIV-1/ZIP6/SLC39A6 was detected in a paraffin-embedded section of human breast cancer tissue. The tissue section was incubated with rabbit anti-LIV-1/ZIP6/SLC39A6 Antibody (BA2309-1) at a dilution of 1:200 and developed using HRP Conjugated Rabbit IgG Super Vision Assay Kit (Catalog # SV0002) with DAB (Catalog # AR1027) as the chromogen.