

## Basic Information

Product Name	Anti-Mast Cell Chymase/CMA1 Antibody
Gene Name	CMA1
Source	Rabbit
Clonality	Polyclonal
Isotype	IgG
Species Reactivity	human, mouse, rat, rabbit
Tested Application	IHC
Contents	500 ug/ml antibody with PBS, 0.02% NaN <sub>3</sub> , 1 mg/ml BSA and 50% glycerol.
Immunogen	E.coli-derived human CMA1 recombinant protein (Position: I22-N247). Human CMA1 shares 75% and 74% amino acid (aa) sequence identity with mouse and rat CMA1, respectively.
Concentration	500 ug/ml
Purification	Immunogen affinity purified.
Dilution Ratios	Immunohistochemistry (IHC): 1:50-400 (Boiling the paraffin sections in 10mM citrate buffer, pH6.0, or PH8.0 EDTA repair liquid for 20 mins is required for the staining of formalin/paraffin sections.) Optimal working dilutions must be determined by end user.

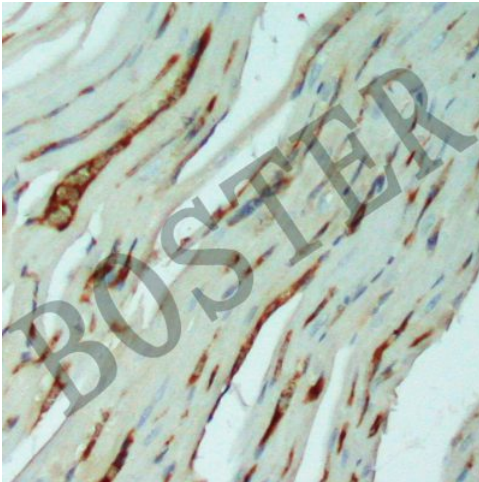
## Storage

12 months from date of receipt, -20°C as supplied.

## Background Information

Chymase is a major secreted protease of mast cells with suspected roles in vasoactive peptide generation, extracellular matrix degradation, and regulation of gland secretion. This gene product is a chymotryptic serine proteinase that belongs to the peptidase family S1. Chymase is mapped to 14q12. It is expressed in mast cells and thought to function in the degradation of the extracellular matrix, the regulation of submucosal gland secretion, and the generation of vasoactive peptides. In the heart and blood vessels, this protein, rather than angiotensin converting enzyme, is largely responsible for converting angiotensin I to the vasoactive peptide angiotensin II.

## Selected Validation Data



IHC analysis of Mast Cell Chymase/CMA1 using anti-Mast Cell Chymase/CMA1 antibody (BA2315-1).

Mast Cell Chymase/CMA1 was detected in a paraffin-embedded section of rabbit cardiac muscle tissue. Biotinylated goat anti-rabbit IgG was used as secondary antibody. The tissue section was incubated with rabbit anti-Mast Cell Chymase/CMA1 Antibody (BA2315-1) at a dilution of 1:200 and developed using Streptavidin-Biotin-Complex (SABC) (Catalog # SA1022) with DAB (Catalog # AR1027) as the chromogen.