

## Basic Information

<b>Product Name</b>	Anti-CDC42 Antibody
<b>Gene Name</b>	CDC42
<b>Source</b>	Rabbit
<b>Clonality</b>	Polyclonal
<b>Isotype</b>	IgG
<b>Species Reactivity</b>	human, mouse, rat, bovine
<b>Tested Application</b>	WB, IHC
<b>Contents</b>	500 ug/ml antibody with PBS, 0.02% NaN <sub>3</sub> , 1 mg/ml BSA and 50% glycerol.
<b>Immunogen</b>	A synthetic peptide corresponding to a sequence in the middle region of human CDC42, identical to the related mouse and rat sequences.
<b>Concentration</b>	500 ug/ml
<b>Purification</b>	Immunogen affinity purified.
<b>Observed MW</b>	21 kDa
<b>Dilution Ratios</b>	Western blot (WB): 1:500-2000 Immunohistochemistry (IHC): 1:50-400 (Boiling the paraffin sections in 10mM citrate buffer, pH6.0, or PH8.0 EDTA repair liquid for 20 mins is required for the staining of formalin/paraffin sections.) Optimal working dilutions must be determined by end user.

## Storage

12 months from date of receipt, -20°C as supplied.

## Background Information

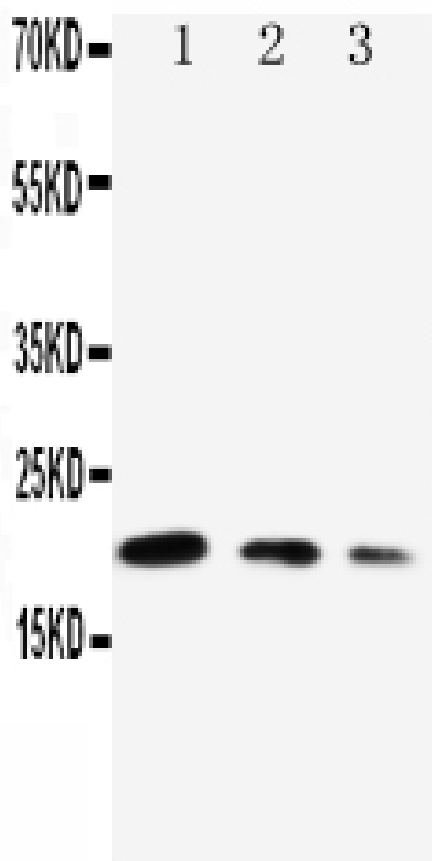
Cell division control protein 42 homolog also known as CDC42 is a protein involved in regulation of the cell cycle. In humans, CDC42 is encoded by the CDC42 gene. CDC42 is a small GTPase of the Rho-subfamily, which regulates signaling pathways that control diverse cellular functions including cell morphology, migration, endocytosis and cell cycle progression. This protein is highly similar to *Saccharomyces cerevisiae* Cdc 42, and is able to complement the yeast *cdc42-1* mutant. The product of oncogene *Dbl* was reported to specifically catalyze the dissociation of GDP from this protein. This protein could regulate actin polymerization through its direct binding to Neural Wiskott-Aldrich syndrome protein (N-WASP), which subsequently activates Arp2/3 complex. Alternative splicing of this gene results in

multiple transcript variants.

## Reference

Anti-CDC42 Antibody 被引用在7文献中。

## Selected Validation Data



Western blot analysis of CDC42 using anti-CDC42 antibody (BA2442).

Lane 1: recombinant human CDC42 protein 10ng,

Lane 2: recombinant human CDC42 protein 5ng,

Lane 3: recombinant human CDC42 protein 2.5ng.

After electrophoresis, proteins were transferred to a membrane.

Then the membrane was incubated with rabbit anti-CDC42 antigen affinity purified polyclonal antibody (BA2442) at a dilution of 1:1000 and probed with a goat anti-rabbit IgG-HRP secondary antibody (Catalog # BA1054). The signal is developed using ECL Plus Western Blotting Substrate (Catalog # AR1197). A specific band was detected for CDC42 at approximately 21 kDa.

Product datasheet

## Anti-CDC42 Antibody

Catalog Number: **BA2442**

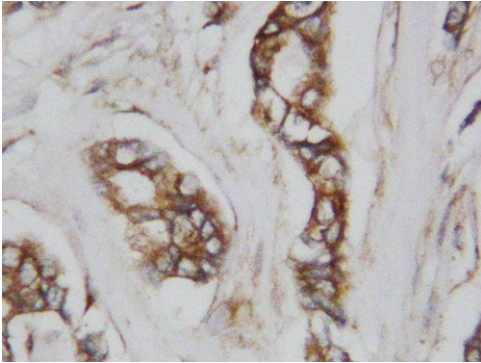
**BOSTER**<sup>®</sup>

antibody and ELISA experts

**BOSTER BIOLOGICAL TECHNOLOGY**

Building C21, 3rd to 5th Floors, Optics Valley Biopharmaceutical Accelerator,  
East Lake High-Tech Development Zone, Wuhan.

**Web:** [www.boster.com](http://www.boster.com) **Phone:** 027-67845390/1/2 **Email:** [boster@boster.com](mailto:boster@boster.com)



IHC analysis of CDC42 using anti-CDC42 antibody (BA2442). CDC42 was detected in a paraffin-embedded section of human mammary cancer tissue. The tissue section was incubated with rabbit anti-CDC42 Antibody (BA2442) at a dilution of 1:200 and developed using HRP Conjugated Rabbit IgG Super Vision Assay Kit (Catalog # SV0002) with DAB (Catalog # AR1027) as the chromogen.