

Basic Information

Product Name	Anti-SFTPA1 Antibody	
Gene Name	SFTPA1	
Source	Rabbit	
Clonality	Polyclonal	
Isotype	IgG	
Species Reactivity	mouse, rat	
Tested Application	WB, IHC	
Contents	500 ug/ml antibody with PBS, 0.02% NaN ₃ , 1 mg/ml BSA and 50% glycerol.	
Immunogen	A synthetic peptide corresponding to a sequence at the C-terminus of human SFTPA1, different from the rat sequence by two amino acids.	
Concentration	500 ug/ml	
Purification	Immunogen affinity purified.	
Observed MW	26-35 kDa	
Dilution Ratios	Western blot (WB): 1:500-2000 Immunohistochemistry (IHC): 1:50-400 (Boiling the paraffin sections in 10mM citrate buffer, pH6.0, or PH8.0 EDTA repair liquid for 20 mins is required for the staining of formalin/paraffin sections.) Optimal working dilutions must be determined by end user.	

Storage

12 months from date of receipt, -20°C as supplied.

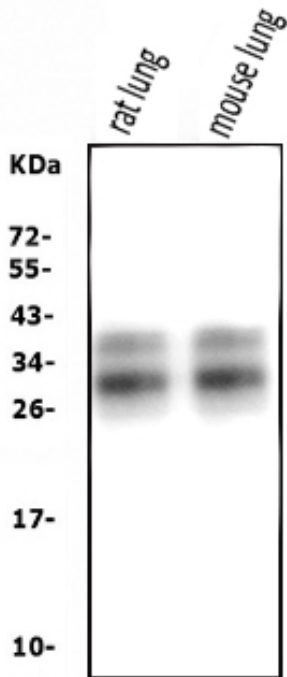
Background Information

Surfactant protein A is an innate immune system collectin. The gene encoding SP-A map to mouse chromosome 14.1. Surfactant protein-A, which plays a role in innate host defense in the lung, is also expressed in the Eustachian tube. We report that the frequency of specific surfactant protein-A haplotypes and genotypes differs between children with recurrent otitis media compared with a control population.

Reference

Anti-SFTPA1 Antibody被引用在1文献中。

Selected Validation Data



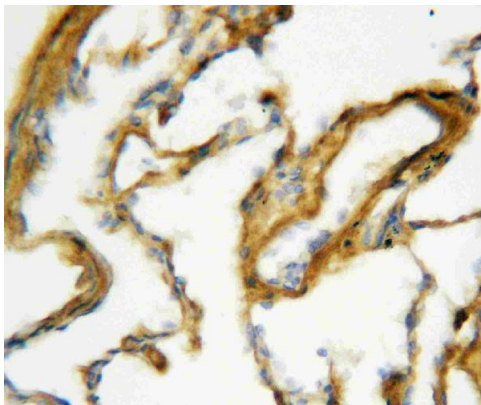
Western blot analysis of SFTP1 using anti-SFTP1 antibody (BA2598).

The sample well of each lane was loaded with 30 ug of sample under reducing conditions.

Lane 1: rat lung tissue lysates,

Lane 2: mouse lung tissue lysates.

After electrophoresis, proteins were transferred to a membrane. Then the membrane was incubated with rabbit anti-SFTP1 antigen affinity purified polyclonal antibody (BA2598) at a dilution of 1:1000 and probed with a goat anti-rabbit IgG-HRP secondary antibody (Catalog # BA1054). The signal is developed using ECL Plus Western Blotting Substrate (Catalog # AR1197). A specific band was detected for SFTP1 at approximately 26-35 kDa. The expected band size for SFTP1 is at 26 kDa.



IHC analysis of SFTP1 using anti-SFTP1 antibody (BA2598).

SFTP1 was detected in a paraffin-embedded section of rat lung tissue.

Biotinylated goat anti-rabbit IgG was used as secondary antibody. The tissue section was incubated with rabbit anti-SFTP1 Antibody (BA2598) at a dilution of 1:200 and developed using Streptavidin-Biotin-Complex (SABC) (Catalog # SA1022) with DAB (Catalog # AR1027) as the chromogen.