

Basic Information

Product Name	Anti-DISC1 Antibody
Gene Name	DISC1
Source	Rabbit
Clonality	Polyclonal
Isotype	IgG
Species Reactivity	human
Tested Application	WB
Contents	500 ug/ml antibody with PBS, 0.02% NaN ₃ , 1 mg/ml BSA and 50% glycerol.
Immunogen	A synthetic peptide corresponding to a sequence at the N-terminus of human DISC1.
Concentration	500 ug/ml
Purification	Immunogen affinity purified.
Observed MW	100 kDa
Dilution Ratios	Western blot (WB):1:500-2000

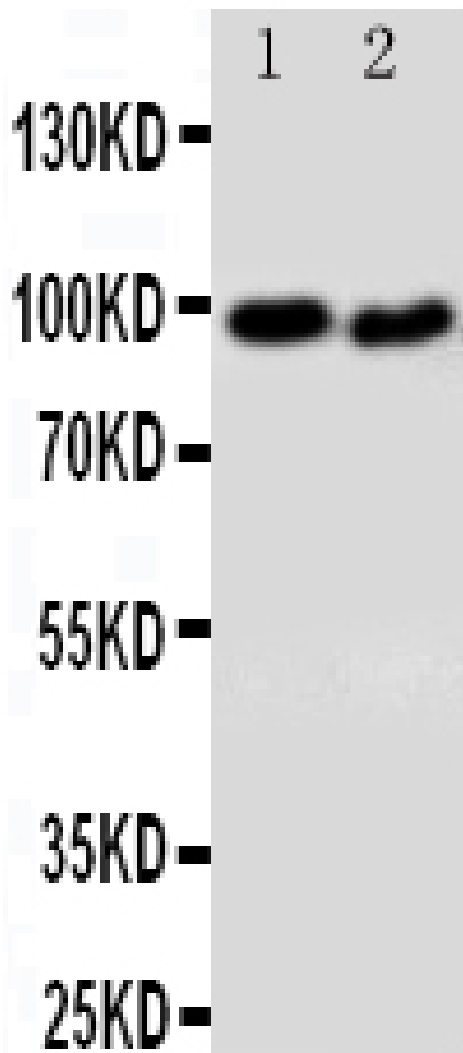
Storage

12 months from date of receipt, -20°C as supplied.

Background Information

DISC1(Disrupted in Schizophrenia 1), is a protein that is encoded by the DISC1 gene in humans. Ma et al.(2002) determined that the mouse Disc1 gene maps to chromosome 8 in a region with homology of synteny to human chromosome 1q42. Ozeki et al.(2003) demonstrated that rodent Disc1 expression displayed pronounced developmental regulation, with the highest levels in late embryonic life during development of the cerebral cortex. Millar et al.(2005) showed that DISC1 interacts with the UCR2 domain of phosphodiesterase-4B, implicated in susceptibility to schizophrenia, and that elevation of cellular cAMP leads to dissociation of PDE4B from DISC1 and in increase in PDE4B activity.

Selected Validation Data



Western blot analysis of DISC1 using anti-DISC1 antibody (BA2902-2). The sample well of each lane was loaded with 30 ug of sample under reducing conditions.

Lane 1: U87 whole cell lysates,

Lane 2: SHG whole cell lysates.

After electrophoresis, proteins were transferred to a membrane. Then the membrane was incubated with rabbit anti-DISC1 antigen affinity purified polyclonal antibody (BA2902-2) at a dilution of 1:1000 and probed with a goat anti-rabbit IgG-HRP secondary antibody (Catalog # BA1054). The signal is developed using ECL Plus Western Blotting Substrate (Catalog # AR1197). A specific band was detected for DISC1 at approximately 100 kDa. The expected band size for DISC1 is at 94 kDa.