

Basic Information

Product Name	Anti-AMY1A Antibody
Gene Name	AMY1A
Source	Rabbit
Clonality	Polyclonal
Isotype	IgG
Species Reactivity	human, mouse, rat
Tested Application	WB, IHC
Contents	500 ug/ml antibody with PBS, 0.02% NaN ₃ , 1 mg/ml BSA and 50% glycerol.
Immunogen	A synthetic peptide corresponding to a sequence at the N-terminus of human Alpha Amylase 1, different from the related rat and mouse sequences by one amino acid.
Concentration	500 ug/ml
Purification	Immunogen affinity purified.
Observed MW	58 kDa
Dilution Ratios	Western blot (WB): 1:500-2000 Immunohistochemistry (IHC): 1:50-400 (Boiling the paraffin sections in 10mM citrate buffer,pH6.0,or PH8.0 EDTA repair liquid for 20 mins is required for the staining of formalin/paraffin sections.) Optimal working dilutions must be determined by end user.

Storage

12 months from date of receipt, -20°C as supplied.

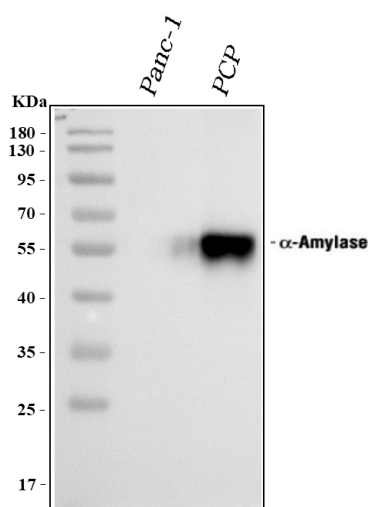
Background Information

Amylase is an enzyme that catalyses the breakdown of starch into sugars. Amylase is present in human saliva, where it begins the chemical process of digestion. By in situ hybridization combined with high resolution cytogenetics, the amylase gene is mapped to 1p21. Amylase enzymes find use in bread making and to break down complex sugars such as starch(found in flour) into simple sugars. Yeast then feeds on these simple sugars and converts it into the waste products of alcohol and CO₂.

Reference

Anti-AMY1A Antibody被引用在1文献中。

Selected Validation Data



Western blot analysis of AMY1A using anti-AMY1A antibody (BA2973). The sample well of each lane was loaded with 30 ug of sample under reducing conditions.

Lane 1: human PANC-1 whole cell lysates,

Lane 2: human PCP tissue lysates.

After electrophoresis, proteins were transferred to a membrane.

Then the membrane was incubated with rabbit anti-AMY1A antigen affinity purified polyclonal antibody (BA2973) at a dilution of 1:1000 and probed with a goat anti-rabbit IgG-HRP secondary antibody (Catalog # BA1054).

The signal is developed using ECL Plus Western Blotting Substrate (Catalog # AR1197). A specific band was detected for AMY1A at approximately 55-58 kDa. The expected band size for AMY1A is at 58 kDa.