

## Basic Information

<b>Product Name</b>	Anti-Caspase 10/CASP10 (N-terminal) Antibody	
<b>Gene Name</b>	CASP10	
<b>Source</b>	Rabbit	
<b>Clonality</b>	Polyclonal	
<b>Isotype</b>	IgG	
<b>Species Reactivity</b>	human	
<b>Tested Application</b>	WB, IHC	
<b>Contents</b>	500 ug/ml antibody with PBS, 0.02% NaN3, 1 mg/ml BSA and 50% glycerol.	
<b>Immunogen</b>	A synthetic peptide corresponding to a sequence at the N-terminus of human CASP10.	
<b>Concentration</b>	500 ug/ml	
<b>Purification</b>	Immunogen affinity purified.	
<b>Observed MW</b>	59 kDa	
<b>Dilution Ratios</b>	Western blot (WB):	1:500-2000
	Immunohistochemistry (IHC):	1:50-400
	(Boiling the paraffin sections in 10mM citrate buffer, pH6.0, or PH8.0 EDTA repair liquid for 20 mins is required for the staining of formalin/paraffin sections.) Optimal working dilutions must be determined by end user.	

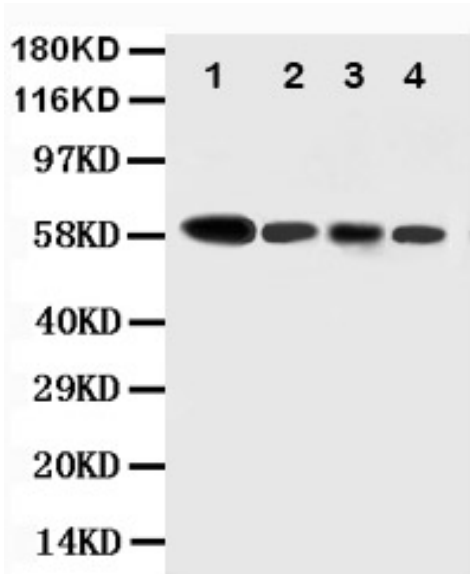
## Storage

12 months from date of receipt, -20°C as supplied.

## Background Information

Caspase-10 is an enzyme that, in humans, is encoded by the CASP10 gene. The Caspase 10 gene contains 11 exons and spans about 48 kb. This gene is mapped to 2q33.1. It is transcribed in the centromere-to-telomere direction. This gene encodes a protein that is a member of the cysteine-aspartic acid protease (caspase) family. Sequential activation of caspases plays a central role in the execution-phase of cell apoptosis. Caspases exist as inactive proenzymes that undergo proteolytic processing at conserved aspartic residues to produce two subunits, large and small, that dimerize to form the active enzyme. This protein cleaves and activates caspases 3 and 7, and the protein itself is processed by caspase 8. Mutations in this gene are associated with apoptosis defects seen in type II autoimmune lymphoproliferative syndrome. Three alternatively spliced transcript variants encoding different isoforms have been described for this gene.

## Selected Validation Data



Western blot analysis of Caspase 10/CASP10 using anti-Caspase 10/CASP10 antibody (BA3192). The sample well of each lane was loaded with 30 ug of sample under reducing conditions.

Lane 1: COLO320 whole cell lysates,

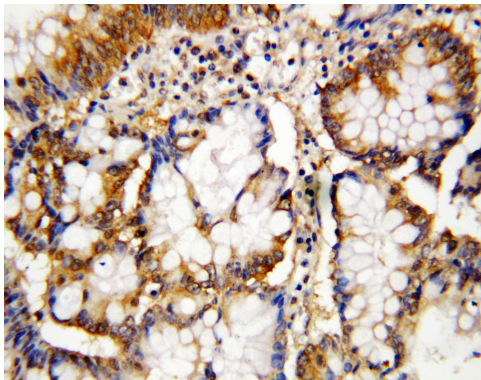
Lane 2: HELA whole cell lysates,

Lane 3: SW620 whole cell lysates,

Lane 4: RAJI whole cell lysates.

After electrophoresis, proteins were transferred to a membrane.

Then the membrane was incubated with rabbit anti-Caspase 10/CASP10 antigen affinity purified polyclonal antibody (BA3192) at a dilution of 1:1000 and probed with a goat anti-rabbit IgG-HRP secondary antibody (Catalog # BA1054). The signal is developed using ECL Plus Western Blotting Substrate (Catalog # AR1197). A specific band was detected for Caspase 10/CASP10 at approximately 59 kDa. The expected band size for Caspase 10/CASP10 is at 59 kDa.



IHC analysis of Caspase 10/CASP10 using anti-Caspase 10/CASP10 antibody (BA3192).

Caspase 10/CASP10 was detected in a paraffin-embedded section of human intestinal cancer tissue. The tissue section was incubated with rabbit anti-Caspase 10/CASP10 Antibody (BA3192) at a dilution of 1:200 and developed using HRP Conjugated Rabbit IgG Super Vision Assay Kit (Catalog # SV0002) with DAB (Catalog # AR1027) as the chromogen.