

Basic Information

| | | |
|--------------------|---|--|
| Product Name | Anti-Caspase 6/CASP6 (p18) Antibody | |
| Gene Name | CASP6 | |
| Source | Rabbit | |
| Clonality | Polyclonal | |
| Isotype | IgG | |
| Species Reactivity | mouse, rat | |
| Tested Application | WB, IHC | |
| Contents | 500 ug/ml antibody with PBS, 0.02% NaN ₃ , 1 mg/ml BSA and 50% glycerol. | |
| Immunogen | A synthetic peptide corresponding to a sequence at the N-terminus of rat Caspase-6(P18), different from the related mouse sequence by two amino acids. | |
| Concentration | 500 ug/ml | |
| Purification | Immunogen affinity purified. | |
| Observed MW | 33 kDa | |
| Dilution Ratios | Western blot (WB): 1:500-2000 Immunohistochemistry (IHC): 1:50-400 (Boiling the paraffin sections in 10mM citrate buffer, pH6.0, or PH8.0 EDTA repair liquid for 20 mins is required for the staining of formalin/paraffin sections.) Optimal working dilutions must be determined by end user. | |

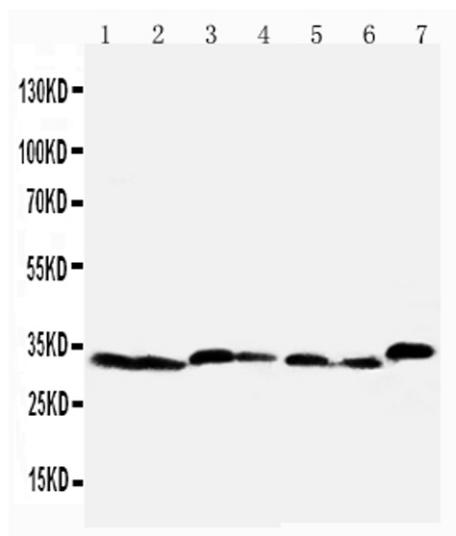
Storage

12 months from date of receipt, -20°C as supplied.

Background Information

Caspase 6 is an enzyme that in humans is encoded by the caspase 6 gene. This gene encodes a protein that is a member of the cysteine-aspartic acid protease (caspase) family. Using radiation hybrid mapping, the Caspase 6 gene is localized to human chromosome 4q25-q26. Caspase 6 functions as a downstream enzyme in the caspase activation cascade. And Caspase 6 can cleave lamin A to its signature apoptotic fragment.

Selected Validation Data



Western blot analysis of Caspase 6/CASP6 (p18) using anti-Caspase 6/CASP6 (p18) antibody (BA3328). The sample well of each lane was loaded with 30 ug of sample under reducing conditions.

Lane 1: Rat Liver tissue lysates,

Lane 2: Rat Kidney tissue lysates,

Lane 3: Rat Testis tissue lysates,

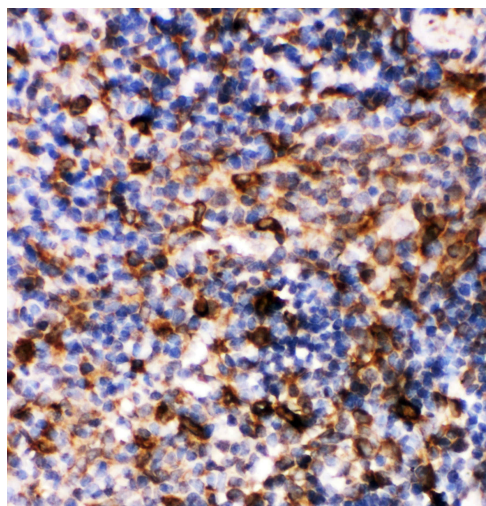
Lane 4: NRK whole cell lysates,

Lane 5: Mouse Liver tissue lysates,

Lane 6: Mouse Kidney tissue lysates,

Lane 7: Mouse Testis tissue lysates.

After electrophoresis, proteins were transferred to a membrane. Then the membrane was incubated with rabbit anti-Caspase 6/CASP6 (p18) antigen affinity purified polyclonal antibody (BA3328) at a dilution of 1:1000 and probed with a goat anti-rabbit IgG-HRP secondary antibody (Catalog # BA1054). The signal is developed using ECL Plus Western Blotting Substrate (Catalog # AR1197). A specific band was detected for Caspase 6/CASP6 (p18) at approximately 33 kDa. The expected band size for Caspase 6/CASP6 (p18) is at 32 kDa.



IHC analysis of Caspase 6/CASP6 (p18) using anti-Caspase 6/CASP6 (p18) antibody (BA3328).

Caspase 6/CASP6 (p18) was detected in a paraffin-embedded section of rat spleen tissue. The tissue section was incubated with rabbit anti-Caspase 6/CASP6 (p18) Antibody (BA3328) at a dilution of 1:200 and developed using HRP Conjugated Rabbit IgG Super Vision Assay Kit (Catalog # SV0002) with DAB (Catalog # AR1027) as the chromogen.