

Basic Information

Product Name	Anti-Serpin C1/Antithrombin III/SERPINC1 Antibody
Gene Name	SERPINC1
Source	Rabbit
Clonality	Polyclonal
Isotype	IgG
Species Reactivity	human, mouse, rat
Tested Application	WB
Contents	500 ug/ml antibody with PBS, 0.02% NaN3, 1 mg/ml BSA and 50% glycerol.
Immunogen	A synthetic peptide corresponding to a sequence at the N-terminus of human Antithrombin III, different from the related mouse and rat sequences by one amino acid.
Concentration	500 ug/ml
Purification	Immunogen affinity purified.
Observed MW	53 kDa
Dilution Ratios	Western blot (WB):1:500-2000

Storage

12 months from date of receipt, -20°C as supplied.

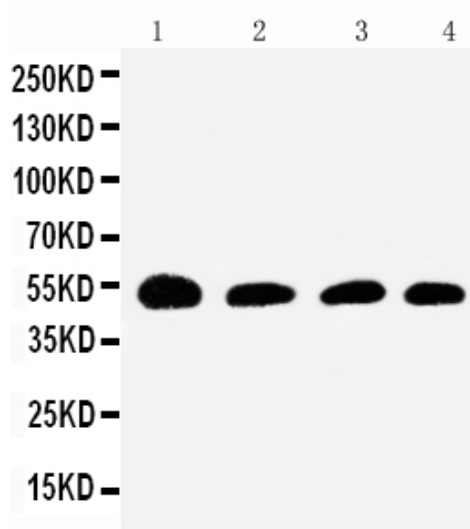
Background Information

Serpin peptidase inhibitor, clade C(antithrombin), member 1, also known as Antithrombin III(AT3) is the most important inhibitor of thrombin OMBIN III and other coagulation proteinases. This gene is mapped to 1q25.1. The protein encoded by this gene is a plasma protease inhibitor and a member of the serpin superfamily. This protein inhibits thrombin as well as other activated serine proteases of the coagulation system, and it regulates the blood coagulation cascade. The protein includes two functional domains: the heparin binding-domain at the N-terminus of the mature protein, and the reactive site domain at the C-terminus. The inhibitory activity is enhanced by the presence of heparin. More than 120 mutations have been identified for this gene, many of which are known to cause antithrombin-III deficiency.

Reference

Anti-Serpin C1/Antithrombin III/SERPINC1 Antibody被引用在3文献中。

Selected Validation Data



Western blot analysis of Serpin C1/Antithrombin III/SERPINC1 using anti-Serpin C1/Antithrombin III/SERPINC1 antibody (BA3354). The sample well of each lane was loaded with 30 ug of sample under reducing conditions.

Lane 1: Rat Testis tissue lysates,

Lane 2: SMMC whole cell lysates,

Lane 3: JURKAT whole cell lysates,

Lane 4: RAJI whole cell lysates.

After electrophoresis, proteins were transferred to a membrane.

Then the membrane was incubated with rabbit anti-Serpin C1/Antithrombin III/SERPINC1 antigen affinity purified polyclonal antibody (BA3354) at a dilution of 1:1000 and probed with a goat anti-rabbit IgG-HRP secondary antibody (Catalog # BA1054). The signal is developed using ECL Plus Western Blotting Substrate (Catalog # AR1197). A specific band was detected for Serpin C1/Antithrombin III/SERPINC1 at approximately 53 kDa. The expected band size for Serpin C1/Antithrombin III/SERPINC1 is at 53 kDa.