

Basic Information

Product Name	Anti-Alpha Antichymotrypsin/SERPINA3 Antibody	
Gene Name	SERPINA3	
Source	Rabbit	
Clonality	Polyclonal	
Isotype	IgG	
Species Reactivity	human	
Tested Application	WB, IHC	
Contents	500 ug/ml antibody with PBS, 0.02% NaN ₃ , 1 mg/ml BSA and 50% glycerol.	
Immunogen	A synthetic peptide corresponding to a sequence in the middle region of human alpha 1 Antichymotrypsin.	
Concentration	500 ug/ml	
Purification	Immunogen affinity purified.	
Observed MW	50-60 kDa	
Dilution Ratios	Western blot (WB): 1:500-2000 Immunohistochemistry (IHC): 1:50-400 (Boiling the paraffin sections in 10mM citrate buffer,pH6.0,or PH8.0 EDTA repair liquid for 20 mins is required for the staining of formalin/paraffin sections.) Optimal working dilutions must be determined by end user.	

Storage

12 months from date of receipt, -20°C as supplied.

Background Information

Alpha 1-antichymotrypsin, also called serpin peptidase inhibitor, clade A(alpha-1 antiproteinase, antitrypsin), member 3 or GIG24 is an alpha globulin glycoprotein that is a member of the serpin superfamily. In humans, it is encoded by the SERPINA3 gene. This gene is mapped to 14q32.13. The protein encoded by this gene is a plasma protease inhibitor and member of the serine protease inhibitor class. Polymorphisms in this protein appear to be tissue specific and influence protease targeting. Variations in this protein's sequence have been implicated in Alzheimer's disease, and deficiency of this protein has been associated with liver disease. Mutations have been identified in patients with Parkinson disease and chronic obstructive pulmonary disease.

Reference

Anti-Alpha Antichymotrypsin/SERPINA3 Antibody被引用在1文献中。

Selected Validation Data

250KD -

130KD -

100KD -

70KD -

55KD -

35KD -

25KD -

15KD -

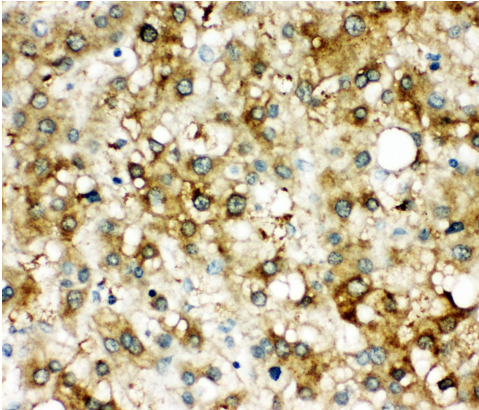


Western blot analysis of Alpha Antichymotrypsin/SERPINA3 using anti-Alpha Antichymotrypsin/SERPINA3 antibody (BA3355). The sample well of each lane was loaded with 30 ug of sample under reducing conditions. Lane 1: human SMMC whole cell lysates.

After electrophoresis, proteins were transferred to a membrane. Then the membrane was incubated with rabbit anti-Alpha Antichymotrypsin/SERPINA3 antigen affinity purified polyclonal antibody (BA3355) at a dilution of 1:1000 and probed with a goat anti-rabbit IgG-HRP secondary antibody (Catalog # BA1054). The signal is developed using ECL Plus Western Blotting Substrate (Catalog # AR1197). A specific band was detected for Alpha Antichymotrypsin/SERPINA3 at approximately 50-60 kDa. The expected band size for Alpha Antichymotrypsin/SERPINA3 is at 48 kDa.

Anti-Alpha Antichymotrypsin/SERPINA3 Antibody

Catalog Number: BA3355



IHC analysis of Alpha Antichymotrypsin/SERPINA3 using anti-Alpha Antichymotrypsin/SERPINA3 antibody (BA3355).

Alpha Antichymotrypsin/SERPINA3 was detected in a paraffin-embedded section of human liver cancer tissue. The tissue section was incubated with rabbit anti-Alpha Antichymotrypsin/SERPINA3 Antibody (BA3355) at a dilution of 1:200 and developed using HRP Conjugated Rabbit IgG Super Vision Assay Kit (Catalog # SV0002) with DAB (Catalog # AR1027) as the chromogen.