

Basic Information

Product Name	Anti-Integrin Alpha 6/ITGA6 Antibody	
Gene Name	ITGA6	
Source	Rabbit	
Clonality	Polyclonal	
Isotype	IgG	
Species Reactivity	human, mouse, rat	
Tested Application	WB, IHC	
Contents	500 ug/ml antibody with PBS, 0.02% NaN ₃ , 1 mg/ml BSA and 50% glycerol.	
Immunogen	A synthetic peptide corresponding to a sequence at the N-terminus of human Integrin alpha 6, different from the related mouse and rat sequences by one amino acid.	
Concentration	500 ug/ml	
Purification	Immunogen affinity purified.	
Observed MW	127 kDa	
Dilution Ratios	Western blot (WB): 1:500-2000 Immunohistochemistry (IHC): 1:50-400 (Boiling the paraffin sections in 10mM citrate buffer, pH6.0, or PH8.0 EDTA repair liquid for 20 mins is required for the staining of formalin/paraffin sections.) Optimal working dilutions must be determined by end user.	

Storage

12 months from date of receipt, -20°C as supplied.

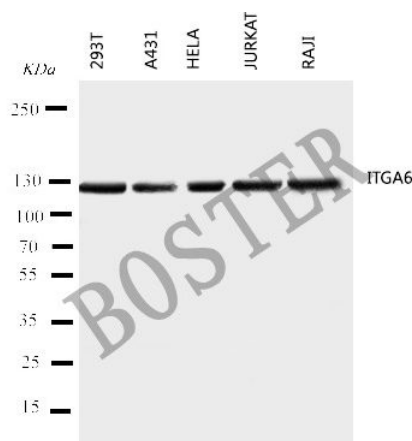
Background Information

Integrin alpha-6, also called VLA-6 or ITGA6B is a protein that in humans is encoded by the ITGA6 gene. This gene is mapped to 2q31.1. The ITGA6 protein product is the integrin alpha chain alpha 6. Integrins are integral cell-surface proteins composed of an alpha chain and a beta chain. A given chain may combine with multiple partners resulting in different integrins. For example, alpha 6 may combine with beta 4 in the integrin referred to as TSP180, or with beta 1 in the integrin VLA-6. Integrins are known to participate in cell adhesion as well as cell-surface mediated signalling. Integrin alpha-6/beta-1 is a receptor for laminin on platelets. Integrin alpha-6/beta-4 is a receptor for laminin in epithelial cells and it plays a critical structural role in the hemidesmosome.

Reference

Anti-Integrin Alpha 6/ITGA6 Antibody被引用在1文献中。

Selected Validation Data



Western blot analysis of Integrin Alpha 6/ITGA6 using anti-Integrin Alpha 6/ITGA6 antibody (BA3356). The sample well of each lane was loaded with 30 ug of sample under reducing conditions.

Lane 1: human 293T whole cell lysates,

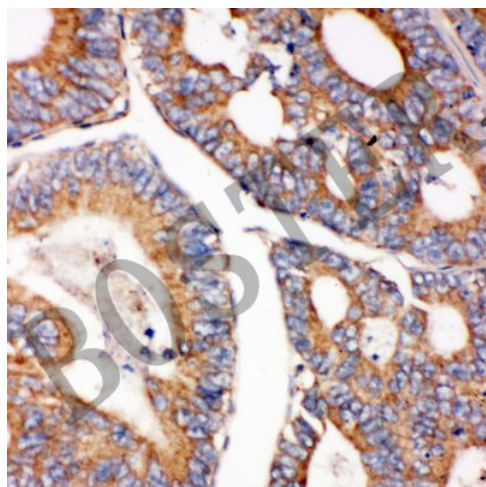
Lane 2: human A431 whole cell lysates,

Lane 3: human Hela whole cell lysates,

Lane 4: human Jurkat whole cell lysates,

Lane 5: human Raji whole cell lysates.

After electrophoresis, proteins were transferred to a membrane. Then the membrane was incubated with rabbit anti-Integrin Alpha 6/ITGA6 antigen affinity purified polyclonal antibody (BA3356) at a dilution of 1:1000 and probed with a goat anti-rabbit IgG-HRP secondary antibody (Catalog # BA1054). The signal is developed using ECL Plus Western Blotting Substrate (Catalog # AR1197). A specific band was detected for Integrin Alpha 6/ITGA6 at approximately 127 kDa. The expected band size for Integrin Alpha 6/ITGA6 is at 127 kDa.



ICC analysis of Integrin Alpha 6/ITGA6 using anti-Integrin Alpha 6/ITGA6 antibody (BA3356).

Integrin Alpha 6/ITGA6 was detected in an immunocytochemical section of Hela cells. The section was incubated with rabbit anti-Integrin Alpha 6/ITGA6 Antibody (BA3356) at a dilution of 1:100. Biotinylated goat anti-rabbit IgG was used as secondary antibody. The section was developed using Streptavidin-Biotin-Complex (SABC)(Catalog # SA1022) with DAB (Catalog # AR1027) as the chromogen.

Product datasheet

Anti-Integrin Alpha 6/ITGA6 Antibody

Catalog Number: **BA3356**



antibody and ELISA experts

BOSTER BIOLOGICAL TECHNOLOGY

Building C21, 3rd to 5th Floors, Optics Valley Biopharmaceutical Accelerator,
East Lake High-Tech Development Zone, Wuhan.

Web: www.boster.com **Phone:** 027-67845390/1/2 **Email:** boster@boster.com