

Basic Information

Product Name	Anti-Ubiquitin/UBB Antibody	
Gene Name	UBB	
Source	Rabbit	
Clonality	Polyclonal	
Isotype	IgG	
Species Reactivity	human, mouse, rat	
Tested Application	WB, IHC	
Contents	500 ug/ml antibody with PBS, 0.02% NaN ₃ , 1 mg/ml BSA and 50% glycerol.	
Immunogen	A synthetic peptide corresponding to a sequence at the N-terminus of human Ubiquitin, identical to the rat and mouse sequences.	
Concentration	500 ug/ml	
Purification	Immunogen affinity purified.	
Observed MW	9,26 kDa	
Dilution Ratios	Western blot (WB): Immunohistochemistry (IHC): (Boiling the paraffin sections in 10mM citrate buffer,pH6.0,or PH8.0 EDTA repair liquid for 20 mins is required for the staining of formalin/paraffin sections.) Optimal working dilutions must be determined by end user.	1:500-2000 1:50-400

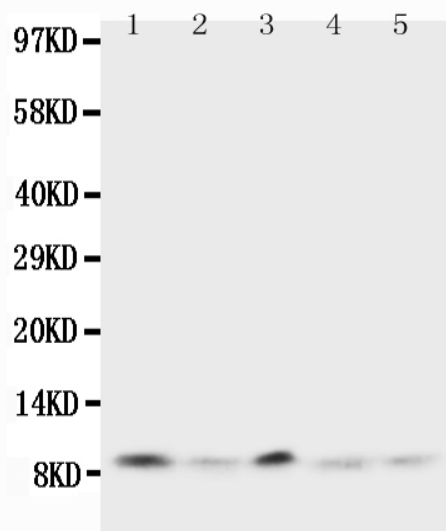
Storage

12 months from date of receipt, -20°C as supplied.

Background Information

Ubiquitin(originally, ubiquitous immunopoietic polypeptide) is a small regulatory protein that has been found in almost all tissues(ubiquitously) of eukaryotic organisms. Its gene is mapped to 16p 13.3. The ubiquitin protein itself consists of 76 amino acids and has a molecular mass of about 8.5 kDa. Ubiquitin binds to proteins and labels them for destruction. It directs protein recycling and also direct proteins to other locations in the cell, where they control other protein and cell mechanisms.

Selected Validation Data



Western blot analysis of Ubiquitin/UBB using anti-Ubiquitin/UBB antibody (BA3363-2). The sample well of each lane was loaded with 30 ug of sample under reducing conditions.

Lane 1: Rat Thymus tissue lysates,

Lane 2: Human MCF-7 whole cell lysates,

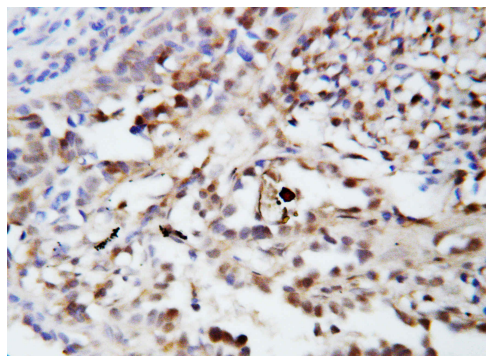
Lane 3: MM231 whole cell lysates,

Lane 4: HELA whole cell lysates,

Lane 5: SMMC whole cell lysates.

After electrophoresis, proteins were transferred to a membrane.

Then the membrane was incubated with rabbit anti-Ubiquitin/UBB antigen affinity purified polyclonal antibody (BA3363-2) at a dilution of 1:1000 and probed with a goat anti-rabbit IgG-HRP secondary antibody (Catalog # BA1054). The signal is developed using ECL Plus Western Blotting Substrate (Catalog # AR1197). A specific band was detected for Ubiquitin/UBB at approximately 9,26 kDa. The expected band size for Ubiquitin/UBB is at 26 kDa.



IHC analysis of Ubiquitin/UBB using anti-Ubiquitin/UBB antibody (BA3363-2).

Ubiquitin/UBB was detected in a paraffin-embedded section of human lung cancer tissue. The tissue section was incubated with rabbit anti-Ubiquitin/UBB Antibody (BA3363-2) at a dilution of 1:200 and developed using HRP Conjugated Rabbit IgG Super Vision Assay Kit (Catalog # SV0002) with DAB (Catalog # AR1027) as the chromogen.