

## Basic Information

Product Name	Anti-CD90/THY1 Antibody	
Gene Name	THY1	
Source	Rabbit	
Clonality	Polyclonal	
Isotype	IgG	
Species Reactivity	human	
Tested Application	WB, IHC	
Contents	500 ug/ml antibody with PBS, 0.02% NaN <sub>3</sub> , 1 mg/ml BSA and 50% glycerol.	
Immunogen	Polypeptide	
Concentration	500 ug/ml	
Purification	Immunogen affinity purified.	
Observed MW	22-30 kDa	
Dilution Ratios	Western blot (WB): 1:500-2000 Immunohistochemistry (IHC): 1:50-400 (Boiling the paraffin sections in 10mM citrate buffer, pH6.0, or PH8.0 EDTA repair liquid for 20 mins is required for the staining of formalin/paraffin sections.) Optimal working dilutions must be determined by end user.	

## Storage

12 months from date of receipt, -20°C as supplied.

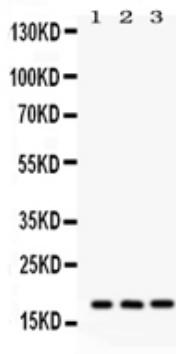
## Background Information

CD90(Cluster of Differentiation 90) or Thy-1 is a 25-37 kDa heavily N-glycosylated, glycoposphatidylinositol(GPI) anchored conserved cell surface protein with a single V-like immunoglobulin domain, originally discovered as a thymocyte antigen. The CD90 gene is mapped to 11q23.3. Thy-1 can be used as a marker for a variety of stem cells and for the axonal processes of mature neurons. Structural study of Thy-1 lead to the foundation of the Immunoglobulin superfamily, of which it is the smallest member, and led to the first biochemical description and characterization of a vertebrate GPI anchor.

## Reference

Anti-CD90/THY1 Antibody被引用在1文献中。

## Selected Validation Data



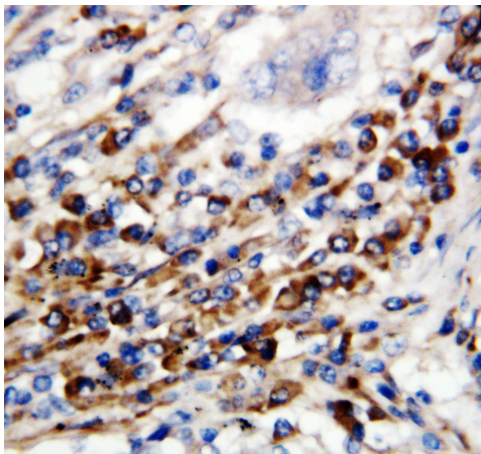
Western blot analysis of CD90/THY1 using anti-CD90/THY1 antibody (BA3391). The sample well of each lane was loaded with 30 ug of sample under reducing conditions.

Lane 1: human Hela whole cell lysates,

Lane 2: human Jurkat whole cell lysates,

Lane 3: human HT1080 whole cell lysates.

After electrophoresis, proteins were transferred to a membrane. Then the membrane was incubated with rabbit anti-CD90/THY1 antigen affinity purified polyclonal antibody (BA3391) at a dilution of 1:1000 and probed with a goat anti-rabbit IgG-HRP secondary antibody (Catalog # BA1054). The signal is developed using ECL Plus Western Blotting Substrate (Catalog # AR1197). A specific band was detected for CD90/THY1 at approximately 22-30 kDa. The expected band size for CD90/THY1 is at 18 kDa.



IHC analysis of CD90/THY1 using anti-CD90/THY1 antibody (BA3391). CD90/THY1 was detected in a paraffin-embedded section of human lung cancer tissue. Biotinylated goat anti-rabbit IgG was used as secondary antibody. The tissue section was incubated with rabbit anti-CD90/THY1 Antibody (BA3391) at a dilution of 1:200 and developed using Streptavidin-Biotin-Complex (SABC) (Catalog # SA1022) with DAB (Catalog # AR1027) as the chromogen.