

Basic Information

Product Name	Anti-LHCGR Antibody	
Gene Name	LHCGR	
Source	Rabbit	
Clonality	Polyclonal	
Isotype	IgG	
Species Reactivity	human, rat	
Tested Application	IHC, WB	
Contents	500 ug/ml antibody with PBS, 0.02% NaN ₃ , 1 mg/ml BSA and 50% glycerol.	
Immunogen	A synthetic peptide corresponding to a sequence at the N-terminus of human hCG receptor, different from the relative rat sequence by two amino acids, mouse sequence by three amino acids.	
Concentration	500 ug/ml	
Purification	Immunogen affinity purified.	
Observed MW	78 kDa	
Dilution Ratios	Western blot (WB): 1:500-2000 Immunohistochemistry (IHC): 1:50-400 (Boiling the paraffin sections in 10mM citrate buffer, pH6.0, or PH8.0 EDTA repair liquid for 20 mins is required for the staining of formalin/paraffin sections.) Optimal working dilutions must be determined by end user.	

Storage

12 months from date of receipt, -20°C as supplied.

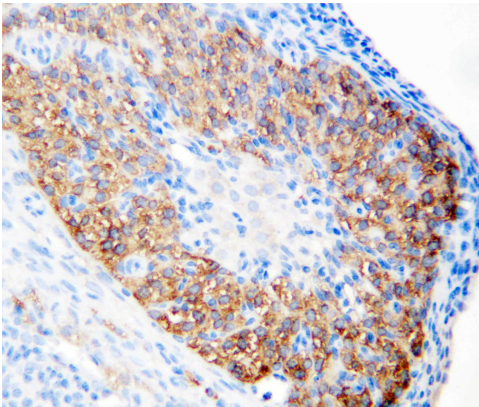
Background Information

The luteinizing hormone/choriogonadotropin receptor is a member of a subfamily of G protein-coupled receptors (GPCR) characterized by the presence of a large N-terminal extracellular domain containing several leucine-rich repeats (LRR). This glycoprotein hormone receptor family has been named the LRR-containing GPCR (LGR) family. The LHCGR gene contains 11 exons and spans approximately 80 kb and it is mapped to chromosome 2p21. In the ovary, theca, stromal, late-stage (luteinizing) granulosa, and luteal cells contain LHCGR. In the testes, Leydig cells contain LHCGR.

Reference

Anti-LHCGR Antibody被引用在10文献中。

Selected Validation Data



IHC analysis of LHCGR using anti-LHCGR antibody (BA3590).

LHCGR was detected in a paraffin-embedded section of rat ovary tissue.

The tissue section was incubated with rabbit anti-LHCGR Antibody (BA3590) at a dilution of 1:200 and developed using HRP Conjugated Rabbit IgG Super Vision Assay Kit (Catalog # SV0002) with DAB (Catalog # AR1027) as the chromogen.



Western blot analysis of LHCGR using anti-LHCGR antibody (BA3590). The sample well of each lane was loaded with 30 ug of sample under reducing conditions.

Lane 1: human MCF-7 whole cell lysates.

After electrophoresis, proteins were transferred to a membrane. Then the membrane was incubated with rabbit anti-LHCGR antigen affinity purified polyclonal antibody (BA3590) at a dilution of 1:1000 and probed with a goat anti-rabbit IgG-HRP secondary antibody (Catalog # BA1054). The signal is developed using ECL Plus Western Blotting Substrate (Catalog # AR1197). A specific band was detected for LHCGR at approximately 78 kDa. The expected band size for LHCGR is at 79 kDa.