

Basic Information

Product Name	Anti-Serotonin transporter/SLC6A4 Antibody
Gene Name	SLC6A4
Source	Rabbit
Clonality	Polyclonal
Isotype	IgG
Species Reactivity	human
Tested Application	WB
Contents	500 ug/ml antibody with PBS, 0.02% NaN ₃ , 1 mg/ml BSA and 50% glycerol.
Immunogen	A synthetic peptide corresponding to a sequence at the N-terminus of human SLC6A4.
Concentration	500 ug/ml
Purification	Immunogen affinity purified.
Observed MW	70-90 kDa
Dilution Ratios	Western blot (WB):1:500-2000

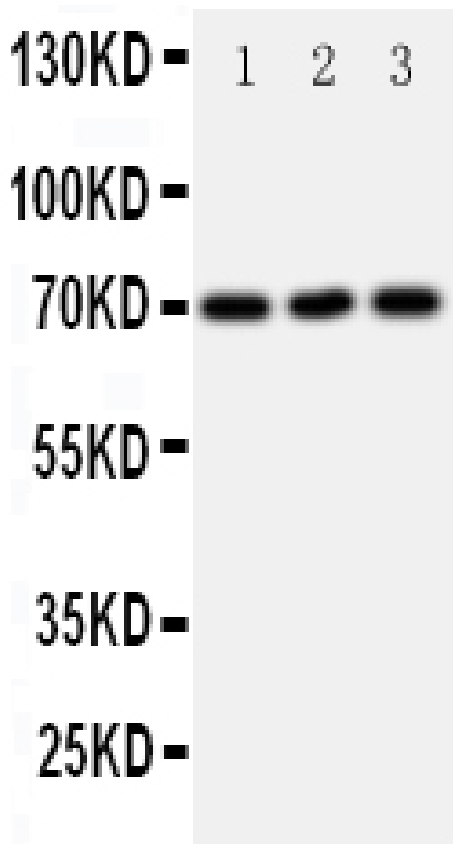
Storage

12 months from date of receipt, -20°C as supplied.

Background Information

SLC6A4(Solute carrier family 6, member 4), also known as SERT(serotonin transporter), is a monoamine transporter protein. The SLC6A4 gene spans 31 kb and contains 14 exons. This protein integral membrane protein that transports the neurotransmitter serotonin from synaptic spaces into presynaptic neurons. This transport of serotonin by the SERT protein terminates the action of serotonin and recycles it in a sodium-dependent manner. This protein is the target of many antidepressant medications, including those of the SSRI class. It is a member of the sodium:neurotransmitter symporter family. A repeat length polymorphism in the promoter of this gene has been shown to affect the rate of serotonin uptake and may play a role in sudden infant death syndrome, aggressive behavior in Alzheimer disease patients, post-traumatic stress disorder and depression-susceptibility in people experiencing emotional trauma.

Selected Validation Data



Western blot analysis of Serotonin transporter/SLC6A4 using anti-Serotonin transporter/SLC6A4 antibody (BA3706-2). The sample well of each lane was loaded with 30 ug of sample under reducing conditions.

Lane 1: U87 whole cell lysates,

Lane 2: HELA whole cell lysates,

Lane 3: JURKAT whole cell lysates.

After electrophoresis, proteins were transferred to a membrane. Then the membrane was incubated with rabbit anti-Serotonin transporter/SLC6A4 antigen affinity purified polyclonal antibody (BA3706-2) at a dilution of 1:1000 and probed with a goat anti-rabbit IgG-HRP secondary antibody (Catalog # BA1054). The signal is developed using ECL Plus Western Blotting Substrate (Catalog # AR1197). A specific band was detected for Serotonin transporter/SLC6A4 at approximately 70-90 kDa. The expected band size for Serotonin transporter/SLC6A4 is at 70 kDa.