

Basic Information

Product Name	Anti-Caspase 6/CASP6 (large) Antibody	
Gene Name	CASP6	
Source	Rabbit	
Clonality	Polyclonal	
Isotype	IgG	
Species Reactivity	human	
Tested Application	WB, IHC, FCM	
Contents	500 ug/ml antibody with PBS, 0.02% NaN ₃ , 1 mg/ml BSA and 50% glycerol.	
Immunogen	A synthetic peptide corresponding to a sequence at the N-terminus of human Caspase-6(P18).	
Concentration	500 ug/ml	
Purification	Immunogen affinity purified.	
Observed MW	33 kDa	
Dilution Ratios	Western blot (WB): 1:500-2000 Immunohistochemistry (IHC): 1:50-400 Flow Cytometry (Fixed): 1:50-200 (Boiling the paraffin sections in 10mM citrate buffer,pH6.0,or PH8.0 EDTA repair liquid for 20 mins is required for the staining of formalin/paraffin sections.) Optimal working dilutions must be determined by end user.	

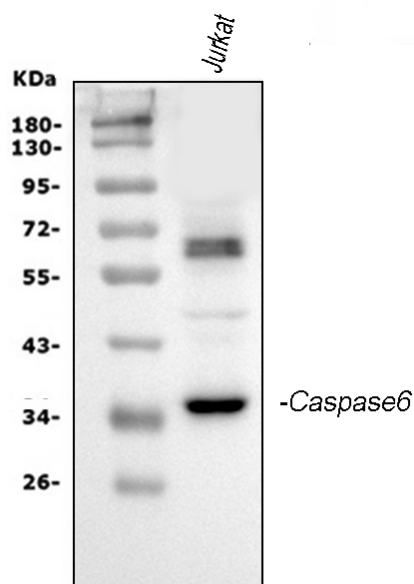
Storage

12 months from date of receipt, -20°C as supplied.

Background Information

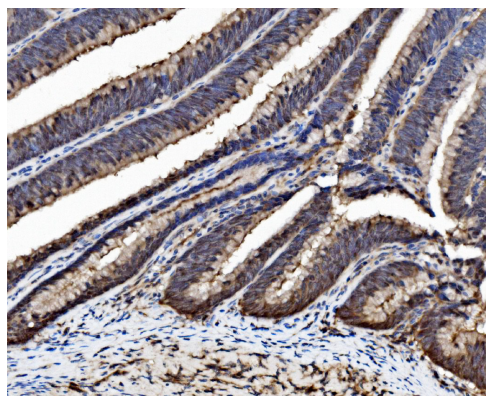
Caspase 6 is an enzyme that in humans is encoded by the caspase 6 gene. This gene encodes a protein that is a member of the cysteine-aspartic acid protease(caspase) family. Using radiation hybrid mapping, the Caspase 6 gene is localized to human chromosome 4q25-q26. Caspase 6 functions as a downstream enzyme in the caspase activation cascade. And Caspase 6 can cleave lamin A to its signature apoptotic fragment.

Selected Validation Data



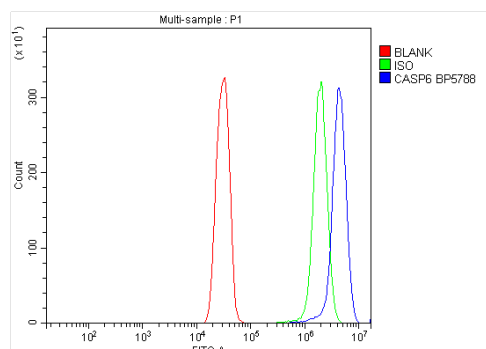
Western blot analysis of Caspase 6/CASP6 (large) using anti-Caspase 6/CASP6 (large) antibody (BA3969). The sample well of each lane was loaded with 30 ug of sample under reducing conditions. Lane 1: Jurkat whole cell lysates.

After electrophoresis, proteins were transferred to a membrane. Then the membrane was incubated with rabbit anti-Caspase 6/CASP6 (large) antigen affinity purified polyclonal antibody (BA3969) at a dilution of 1:1000 and probed with a goat anti-rabbit IgG-HRP secondary antibody (Catalog # BA1054). The signal is developed using ECL Plus Western Blotting Substrate (Catalog # AR1197). A specific band was detected for Caspase 6/CASP6 (large) at approximately 33 kDa. The expected band size for Caspase 6/CASP6 (large) is at 33 kDa.



IHC analysis of Caspase 6/CASP6 (large) using anti-Caspase 6/CASP6 (large) antibody (BA3969).

Caspase 6/CASP6 (large) was detected in a paraffin-embedded section of human Colorectal adenocarcinoma tissue. Biotinylated goat anti-rabbit IgG was used as secondary antibody. The tissue section was incubated with rabbit anti-Caspase 6/CASP6 (large) Antibody (BA3969) at a dilution of 1:200 and developed using Streptavidin-Biotin-Complex (SABC) (Catalog # SA1022) with DAB (Catalog # AR1027) as the chromogen.



Flow Cytometry analysis of SiHa cells using anti-Caspase 6/CASP6 (large) antibody (BA3969).

Overlay histogram showing SiHa cells stained with BA3969 (Blue line). To facilitate intracellular staining, cells were fixed with 4% paraformaldehyde and permeabilized with permeabilization buffer. The cells were blocked with 10% normal goat serum. And then incubated with rabbit anti-Caspase 6/CASP6 (large) Antibody (BA3969) at 1:100 dilution for 30 min at 20°C. Fluoro488 conjugated

goat anti-rabbit IgG (BA1127) was used as secondary antibody at 1:100 dilution for 30 minutes at 20°C. Isotype control antibody (Green line) was rabbit IgG at 1:100 dilution used under the same conditions. Unlabelled sample without incubation with primary antibody and secondary antibody (Red line) was used as a blank control.