

Basic Information

Product Name	Anti-IP10/CXCL10 Antibody	
Gene Name	CXCL10	
Source	Rabbit	
Clonality	Polyclonal	
Isotype	IgG	
Species Reactivity	human	
Tested Application	WB, IHC	
Contents	500 ug/ml antibody with PBS, 0.02% NaN ₃ , 1 mg/ml BSA and 50% glycerol.	
Immunogen	A synthetic peptide corresponding to a sequence at the C-terminus of human IP10.	
Concentration	500 ug/ml	
Purification	Immunogen affinity purified.	
Observed MW	11 kDa	
Dilution Ratios	Western blot (WB): 1:500-2000 Immunohistochemistry (IHC): 1:50-400 (Boiling the paraffin sections in 10mM citrate buffer, pH6.0, or PH8.0 EDTA repair liquid for 20 mins is required for the staining of formalin/paraffin sections.) Optimal working dilutions must be determined by end user.	

Storage

12 months from date of receipt, -20°C as supplied.

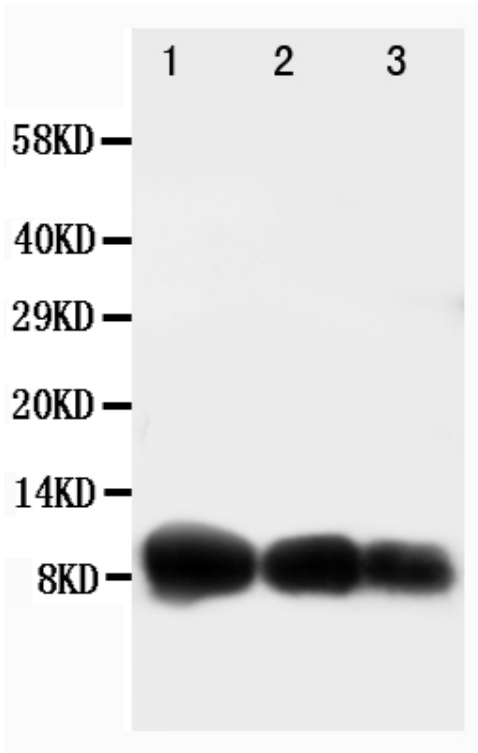
Background Information

C-X-C motif chemokine 10 (CXCL10), also known as Interferon gamma-induced protein 10 kDa (IP-10) or small-inducible cytokine B10, is a protein that in humans is encoded by the CXCL10 gene. It is a small cytokine belonging to the CXC chemokine family. The gene for CXCL10 is located on human chromosome 4 in a cluster among several other CXC chemokines. Luster et al. (1987) reported the isolation of an interferon-inducible gene that encodes a 98-amino acid protein called IP10. The chemokine IFN-gamma-inducible protein 10 (IP-10; CXCL10), a CXC chemokine, and its receptor, CXCR3, were found to be overexpressed in lymph node cells of EAMG rats. IP10 inhibits bone marrow colony formation, has antitumor activity in vivo, is a chemoattractant for human monocytes and T cells, and promotes T cell adhesion to endothelial cells.

Reference

Anti-IP10/CXCL10 Antibody 被引用在1文献中。

Selected Validation Data



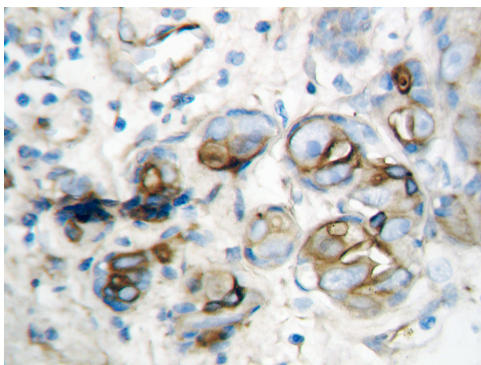
Western blot analysis of IP10/CXCL10 using anti-IP10/CXCL10 antibody (BA4723).

Lane 1: recombinant human CXCL10 protein 10ng,

Lane 2: recombinant human CXCL10 protein 5ng,

Lane 3: recombinant human CXCL10 protein 2.5ng.

After electrophoresis, proteins were transferred to a membrane. Then the membrane was incubated with rabbit anti-IP10/CXCL10 antigen affinity purified polyclonal antibody (BA4723) at a dilution of 1:1000 and probed with a goat anti-rabbit IgG-HRP secondary antibody (Catalog # BA1054). The signal is developed using ECL Plus Western Blotting Substrate (Catalog # AR1197). A specific band was detected for IP10/CXCL10 at approximately 11 kDa.



IHC analysis of IP10/CXCL10 using anti-IP10/CXCL10 antibody (BA4723).

IP10/CXCL10 was detected in a paraffin-embedded section of human mammary cancer tissue. The tissue section was incubated with rabbit anti-IP10/CXCL10 Antibody (BA4723) at a dilution of 1:200 and developed using HRP Conjugated Rabbit IgG Super Vision Assay Kit (Catalog # SV0002) with DAB (Catalog # AR1027) as the chromogen.