

Basic Information

| | | |
|--------------------|---|--|
| Product Name | Anti-EGF Antibody | |
| Gene Name | EGF | |
| Source | Rabbit | |
| Clonality | Polyclonal | |
| Isotype | IgG | |
| Species Reactivity | mouse | |
| Tested Application | WB, IHC | |
| Contents | 500 ug/ml antibody with PBS, 0.02% NaN ₃ , 1 mg/ml BSA and 50% glycerol. | |
| Immunogen | A synthetic peptide corresponding to a sequence at the C-terminus of mouse EGF. | |
| Concentration | 500 ug/ml | |
| Purification | Immunogen affinity purified. | |
| Observed MW | 134 kDa | |
| Dilution Ratios | Western blot (WB): 1:500-2000 Immunohistochemistry (IHC): 1:50-400 (Boiling the paraffin sections in 10mM citrate buffer, pH6.0, or PH8.0 EDTA repair liquid for 20 mins is required for the staining of formalin/paraffin sections.) Optimal working dilutions must be determined by end user. | |

Storage

12 months from date of receipt, -20°C as supplied.

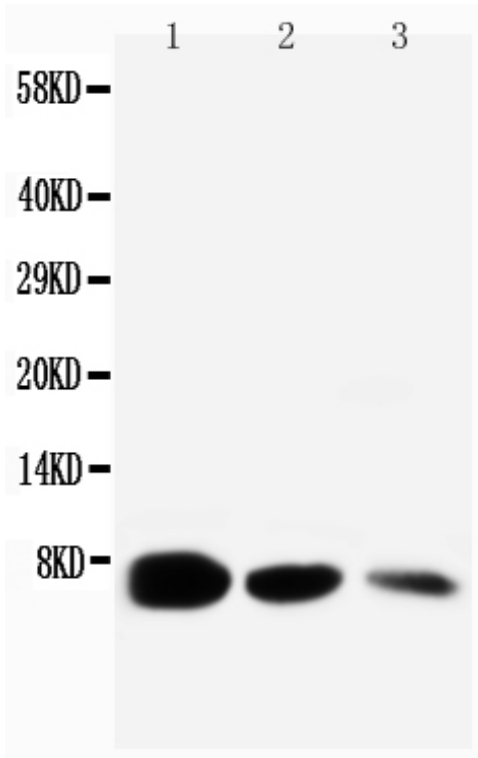
Background Information

EGF is known as epidermal growth factor. This gene encodes a member of the epidermal growth factor superfamily. The encoded preproprotein is proteolytically processed to generate the 53-amino acid epidermal growth factor peptide. This protein acts as a potent mitogenic factor that plays an important role in the growth, proliferation and differentiation of numerous cell types. Additionally, it acts by binding with high affinity to the cell surface receptor, epidermal growth factor receptor. Defects in this gene are the cause of hypomagnesemia type 4. Dysregulation of this gene has been associated with the growth and progression of certain cancers. Alternative splicing results in multiple transcript variants, at least one of which encodes a preproprotein that is proteolytically processed.

Reference

Anti-EGF Antibody被引用在11文献中。

Selected Validation Data



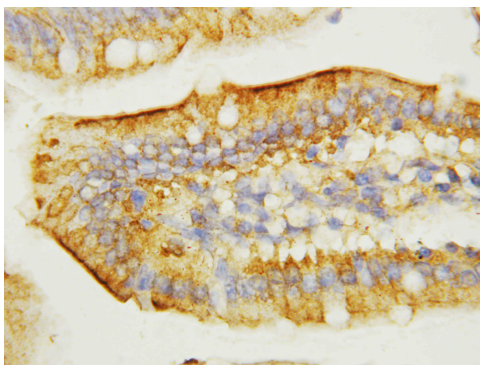
Western blot analysis of EGF using anti-EGF antibody (BA4741).

Lane 1: recombinant mouse EGF protein 10ng,

Lane 2: recombinant mouse EGF protein 5ng,

Lane 3: recombinant mouse EGF protein 2.5ng.

After electrophoresis, proteins were transferred to a membrane. Then the membrane was incubated with rabbit anti-EGF antigen affinity purified polyclonal antibody (BA4741) at a dilution of 1:1000 and probed with a goat anti-rabbit IgG-HRP secondary antibody (Catalog # BA1054). The signal is developed using ECL Plus Western Blotting Substrate (Catalog # AR1197). A specific band was detected for EGF at approximately 134 kDa.



IHC analysis of EGF using anti-EGF antibody (BA4741).

EGF was detected in a paraffin-embedded section of mouse intestine tissue. The tissue section was incubated with rabbit anti-EGF Antibody (BA4741) at a dilution of 1:200 and developed using HRP Conjugated Rabbit IgG Super Vision Assay Kit (Catalog # SV0002) with DAB (Catalog # AR1027) as the chromogen.