

Basic Information

Product Name	Anti-IL7 Antibody
Gene Name	IL7
Source	Rabbit
Clonality	Polyclonal
Isotype	IgG
Species Reactivity	human, mouse
Tested Application	WB, IHC
Contents	500 ug/ml antibody with PBS, 0.02% NaN3, 1 mg/ml BSA and 50% glycerol.
Immunogen	A synthetic peptide corresponding to a sequence at the N-terminus of mouse IL7.
Concentration	500 ug/ml
Purification	Immunogen affinity purified.
Observed MW	20 kDa
Dilution Ratios	Western blot (WB): 1:500-2000 Immunohistochemistry (IHC): 1:50-400 (Boiling the paraffin sections in 10mM citrate buffer, pH6.0, or PH8.0 EDTA repair liquid for 20 mins is required for the staining of formalin/paraffin sections.) Optimal working dilutions must be determined by end user.

Storage

12 months from date of receipt, -20°C as supplied.

Background Information

Interleukin 7 (IL-7) is a protein that in humans is encoded by the IL7 gene. The protein encoded by this gene is a cytokine important for B and T cell development. This cytokine and the hepatocyte growth factor (HGF) form a heterodimer that functions as a pre-pro-B cell growth-stimulating factor. And it is found to be a cofactor for V(D)J rearrangement of the T cell receptor beta (TCRB) during early T cell development. In addition, this cytokine can be produced locally by intestinal epithelial and epithelial goblet cells, and may serve as a regulatory factor for intestinal mucosal lymphocytes. Knockout studies in mice suggested that this cytokine plays an essential role in lymphoid cell survival. Alternative splicing results in multiple transcript variants encoding distinct isoforms. Additional splice variants have been described but their presence in normal tissues has not been confirmed.

Selected Validation Data

KDa

72-

55-

43-

34-

26-

17-

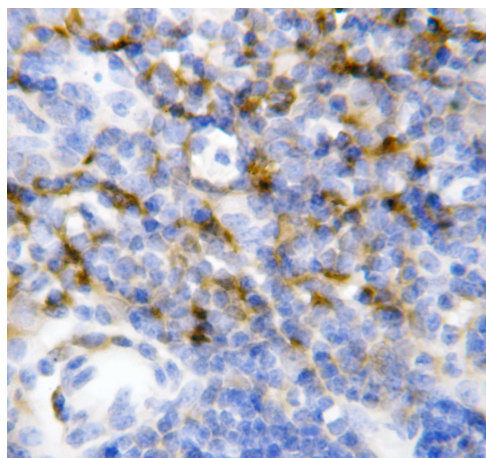
10-



Western blot analysis of IL7 using anti-IL7 antibody (BA4823). The sample well of each lane was loaded with 30 ug of sample under reducing conditions.

Lane 1: human PC-3 whole cell lysates.

After electrophoresis, proteins were transferred to a membrane. Then the membrane was incubated with rabbit anti-IL7 antigen affinity purified polyclonal antibody (BA4823) at a dilution of 1:1000 and probed with a goat anti-rabbit IgG-HRP secondary antibody (Catalog # BA1054). The signal is developed using ECL Plus Western Blotting Substrate (Catalog # AR1197). A specific band was detected for IL7 at approximately 20 kDa. The expected band size for IL7 is at 18 kDa.



IHC analysis of IL7 using anti-IL7 antibody (BA4823).

IL7 was detected in a paraffin-embedded section of mouse spleen tissue. The tissue section was incubated with rabbit anti-IL7 Antibody (BA4823) at a dilution of 1:200 and developed using HRP Conjugated Rabbit IgG Super Vision Assay Kit (Catalog # SV0002) with DAB (Catalog # AR1027) as the chromogen.