

## Basic Information

Product Name	Anti-TNF Beta/LTA Antibody
Gene Name	LTA
Source	Rabbit
Clonality	Polyclonal
Isotype	IgG
Species Reactivity	human
Tested Application	WB
Contents	500 ug/ml antibody with PBS, 0.02% NaN <sub>3</sub> , 1 mg/ml BSA and 50% glycerol.
Immunogen	A synthetic peptide corresponding to a sequence in the middle region of human TNF beta, different from the related mouse sequence by one amino acid.
Concentration	500 ug/ml
Purification	Immunogen affinity purified.
Observed MW	22 kDa
Dilution Ratios	Western blot (WB):1:500-2000

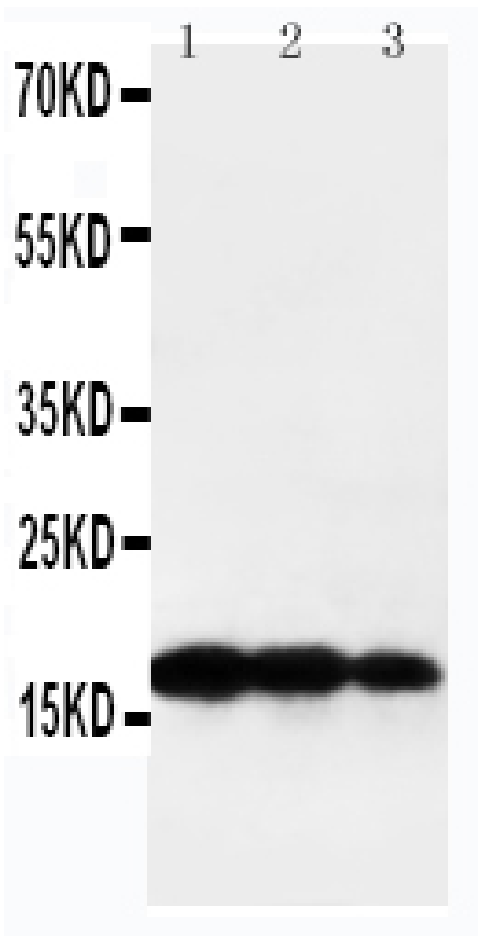
## Storage

12 months from date of receipt, -20°C as supplied.

## Background Information

Lymphotoxin(previously known as tumor necrosis factor-beta) is a lymphokine cytokine. It is a protein that is produced by Th1 type T-cells and induces vascular endothelial cells to change their surface adhesion molecules to allow phagocytic cells to bind to them. Lymphotoxin is homologous to Tumor Necrosis Factor beta, but secreted by T-cells. It is paracrine due to the small amounts produced. The effects are similar to TNF-alpha, but TNF-beta is also important for the development of lymphoid organs. Nedwin et al.(1985) found that TNFA and TNFB are closely linked on chromosome 6. Study of hybrid cells made with rearranged human chromosome 6 showed that both TNFA and TNFB map to the 6p23-q12 segment.

## Selected Validation Data



Western blot analysis of TNF Beta/LTA using anti-TNF Beta/LTA antibody (BA4905-2).

Lane 1: recombinant human TNF $\beta$  protein 10ng,

Lane 2: recombinant human TNF $\beta$  protein 5ng,

Lane 3: recombinant human TNF $\beta$  protein 2.5ng.

After electrophoresis, proteins were transferred to a membrane. Then the membrane was incubated with rabbit anti-TNF Beta/LTA antigen affinity purified polyclonal antibody (BA4905-2) at a dilution of 1:1000 and probed with a goat anti-rabbit IgG-HRP secondary antibody (Catalog # BA1054). The signal is developed using ECL Plus Western Blotting Substrate (Catalog # AR1197). A specific band was detected for TNF Beta/LTA at approximately 22 kDa.