

Basic Information

Product Name	Anti-AFP Antibody(Clone#C3)
Gene Name	AFP
Source	Mouse
Clonality	Monoclonal
Isotype	IgG2a
Species Reactivity	human
Tested Application	IHC
Contents	200ug/ml antibody with PBS , 0.02% NaN ₃ , 1mg BSA and 50% glycerol.
Immunogen	Human alpha-fetoprotein.
Concentration	200ug/ml
Purification	Ascites
Dilution Ratios	Immunohistochemistry (IHC): 1:50-400 (Boiling the paraffin sections in 10mM citrate buffer,pH6.0,or PH8.0 EDTA repair liquid for 20 mins is required for the staining of formalin/paraffin sections.) Optimal working dilutions must be determined by end user.

Storage

12 months from date of receipt, -20°C as supplied.

Background Information

Alpha-fetoprotein(AFP) is a major plasma protein in the fetus, where it is produced by the yolk sac and liver. Direct confirmation of the assignment of the AFP gene to chromosome 4 by in situ hybridization was provided by Harper and Dugaiczky(1983), who placed the gene in the q11-q22 region, the same region as the albumin gene. Structure and evolution of human alpha-fetoprotein deduced from partial sequence of cloned cDNA.As the major fetal serum protein, Alpha-fetoprotein is not essential for embryonic development but is required for female fertility.

Reference

Anti-AFP Antibody(Clone#C3)被引用在1文献中。

Product datasheet

Anti-AFP Antibody(Clone#C3)

Catalog Number: **BM0014**



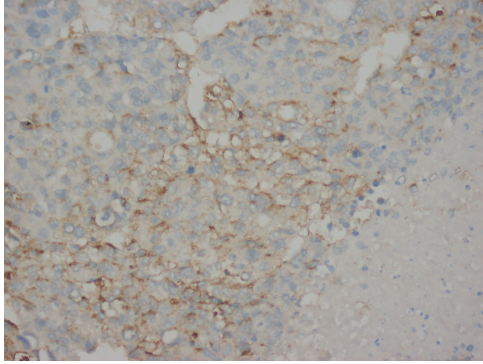
antibody and ELISA experts

BOSTER BIOLOGICAL TECHNOLOGY

Building C21, 3rd to 5th Floors, Optics Valley Biopharmaceutical Accelerator,
East Lake High-Tech Development Zone, Wuhan.

Web: www.boster.com **Phone:** 027-67845390/1/2 **Email:** boster@boster.com

Selected Validation Data



IHC(P): Human Liver Cancer Tissue