

## Basic Information

<b>Product Name</b>	Anti-CA15-3/MUC1 Antibody (Clone#GP1.4)
<b>Gene Name</b>	MUC1
<b>Source</b>	Mouse
<b>Clonality</b>	Monoclonal
<b>Isotype</b>	IgG1
<b>Species Reactivity</b>	human
<b>Tested Application</b>	IHC
<b>Contents</b>	200ug/ml antibody with PBS , 0.02% NaN <sub>3</sub> , 1mg BSA and 50% glycerol.
<b>Immunogen</b>	Human milk fat globule membranes.
<b>Concentration</b>	200ug/ml
<b>Purification</b>	Ascites
<b>Dilution Ratios</b>	Immunohistochemistry (IHC): 1:50-400 (Boiling the paraffin sections in 10mM citrate buffer,pH6.0,or PH8.0 EDTA repair liquid for 20 mins is required for the staining of formalin/paraffin sections.) Optimal working dilutions must be determined by end user.

## Storage

12 months from date of receipt, -20°C as supplied.

## Background Information

MUC1 is a large cell surface mucin glycoprotein expressed by most glandular and ductal epithelial cells and some hematopoietic cell lineages. It is expressed on most secretory epithelium, including mammary gland and some hematopoietic cells. It is expressed abundantly in lactating mammary glands and overexpressed abundantly in >90% breast carcinomas and metastases. Transgenic MUC1 has been shown to associate with all four cebB receptors and localize with erbB1(EGFR) in lactating glands. The MUC1 gene contains seven exons and produces several different alternatively spliced variants. The major expressed form of MUC1 uses all seven exons and is a type I transmembrane protein with a large extracellular tandem repeat domain. The tandem repeat domain is highly O glycosylated and alterations in glycosylation have been shown in epithelial cancer cells.

Product datasheet

**Anti-CA15-3/MUC1 Antibody  
(Clone#GP1.4)**

**Catalog Number: BM0042**

**BOSTER**<sup>®</sup>

antibody and ELISA experts

**BOSTER BIOLOGICAL TECHNOLOGY**

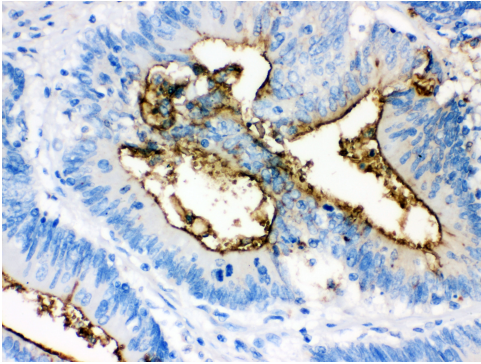
Building C21, 3rd to 5th Floors, Optics Valley Biopharmaceutical Accelerator,  
East Lake High-Tech Development Zone, Wuhan.

**Web:** www.boster.com **Phone:** 027-67845390/1/2 **Email:** boster@boster.com

## Reference

Anti-CA15-3/MUC1 Antibody (Clone#GP1.4)被引用在1文献中。

## Selected Validation Data



IHC(P): Human Intestinal Cancer Tissue