

Basic Information

Product Name	Anti-Insulin/INS Antibody	
Gene Name	INS	
Source	Mouse	
Clonality	Monoclonal	
Isotype	IgG1	
Species Reactivity	human, mouse, rat, rabbit	
Tested Application	IHC, IF	
Contents	200ug/ml antibody with PBS , 0.02% NaN ₃ , 1mg BSA	
Immunogen	Human insulin.	
Concentration	200 ug/ml	
Purification	Ascites	
Dilution Ratios	Immunohistochemistry (IHC): 1:50-400 Immunofluorescence (IF): 1:50-100 (Boiling the paraffin sections in 10mM citrate buffer,pH6.0,or PH8.0 EDTA repair liquid for 20 mins is required for the staining of formalin/paraffin sections.) Optimal working dilutions must be determined by end user.	

Storage

12 months from date of receipt, -20°C as supplied.

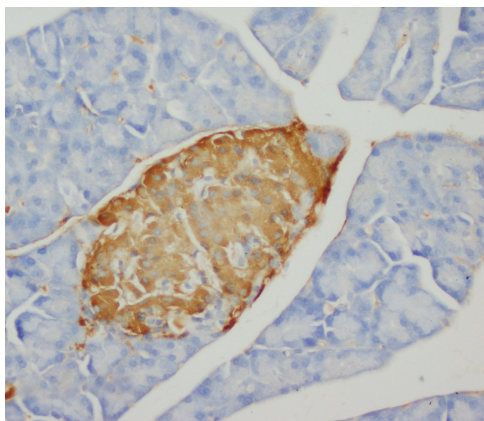
Background Information

Insulin, synthesized by the beta cells of the islets of Langerhans, consists of 2 dissimilar polypeptide chains, A and B, which are linked by 2 disulfide bonds. The insulin gene contains 3 exons and 2 introns; exon 2 encodes the signal peptide, the B chain, and part of the C peptide, while exon 3 encodes the remainder of the C peptide and the A chain. Localization of the human insulin gene to the distal end of the short arm of chromosome 11. Harper et al.(1981) and Harper and Saunders(1981) assigned the insulin gene to 11p15.5 by in situ hybridization.

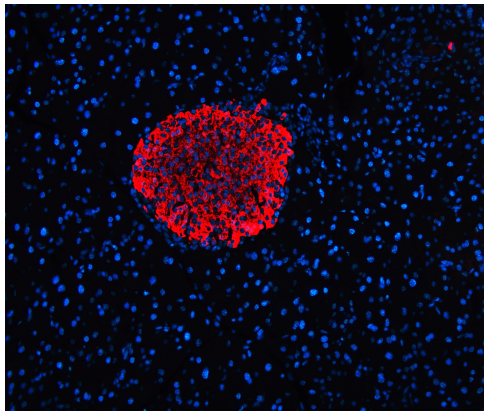
Reference

Anti-Insulin/INS Antibody被引用在27文献中。

Selected Validation Data



IHC analysis of Insulin/INS using anti-Insulin/INS antibody (BM0080). Insulin/INS was detected in a paraffin-embedded section of rat pancreas tissue. The tissue section was incubated with mouse anti-Insulin/INS Antibody (BM0080) at a dilution of 1:200 and developed using HRP Conjugated mouse IgG Super Vision Assay Kit (Catalog # SV0001) with DAB (Catalog # AR1027) as the chromogen.



IF analysis of Insulin/INS using anti-Insulin/INS antibody (BM0080). Insulin/INS was detected in a paraffin-embedded section of mouse pancreas tissue. The tissue section was incubated with mouse anti-Insulin/INS Antibody (BM0080) at a dilution of 1:100. Fluoro594-conjugated Anti-mouse IgG Secondary Antibody (green)(Catalog#BA1141) was used as secondary antibody.