

Basic Information

Product Name	Anti-Myosin (Skeletal, Fast) Antibody (Clone#MY-32)	
Gene Name	MYH1/MYH2	
Source	Mouse	
Clonality	Monoclonal	
Isotype	IgG1	
Species Reactivity	human, mouse, rat, monkey, rabbit	
Tested Application	WB, IHC	
Contents	200 ug/ml antibody with PBS , 0.02% NaN ₃ , 1mg BSA and 50% glycerol.	
Immunogen	Rabbit muscle myosin.	
Concentration	200 ug/ml	
Purification	Ascites	
Observed MW	230 kDa	
Dilution Ratios	Western blot (WB):	1:500-2000
	Immunohistochemistry (IHC):	1:50-400
	(Boiling the paraffin sections in 10mM citrate buffer,pH6.0,or PH8.0 EDTA repair liquid for 20 mins is required for the staining of formalin/paraffin sections.) Optimal working dilutions must be determined by end user.	

Storage

12 months from date of receipt, -20°C as supplied.

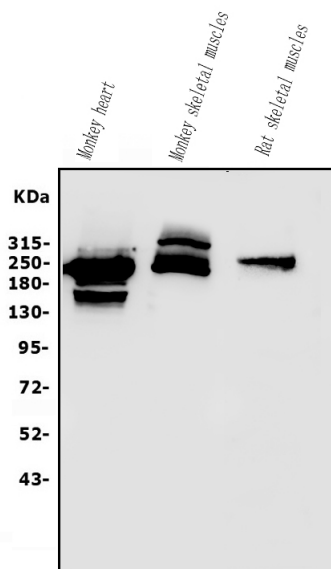
Background Information

Myosin is composed of 2 heavy chains of about 200,000 daltons each and 4 light chains of about 20,000 daltons each. The light chains are of 2 distinct types: the phosphorylatable, regulatory, or MLC2 type, and the nonphosphorylatable, alkali, or MLC1 and MLC3 types(MYL1 according to the HGM symbols). Skeletal Myosin(Fast),, also known as MYL1, mapped to the region 2q32.1-qter.

Reference

Anti-Myosin (Skeletal, Fast) Antibody (Clone#MY-32)被引用在13文献中。

Selected Validation Data



Western blot analysis of anti- Myosin antibody (BM0096). The sample well of each lane was loaded with 50ug of sample under reducing conditions.

Lane 1: Monkey heart tissue lysates,

Lane 2: Monkey skeletal muscle tissue lysates,

Lane 3: Rat skeletal muscle tissue lysates. Use mouse anti- Myosin 1:1000, probed with a goat anti-mouse IgG-HRP secondary antibody.

The signal is developed using an Enhanced Chemiluminescent detection (ECL) kit (Catalog # EK1001). A specific band was detected for Myosin at approximately 230KD. The expected band size for Myosin is at 223KD.