

Basic Information

Product Name	Anti-Vimentin/VIM Antibody (Clone#V9)	
Gene Name	VIM	
Source	Mouse	
Clonality	Monoclonal	
Isotype	IgG1	
Species Reactivity	human, rat, pig, rabbit	
Tested Application	WB, IHC, IF	
Contents	500 ug/ml antibody with PBS , 0.02% NaN ₃ , 1 mg BSA and 50% glycerol.	
Immunogen	Pig eye lens vimentin.	
Concentration	500 ug/ml	
Purification	Ascites	
Observed MW	56 kDa	
Dilution Ratios	Western blot (WB): 1:500-2000 Immunohistochemistry (IHC): 1:1000-5000 Immunofluorescence (IF): 1:1000-5000 (Boiling the paraffin sections in 10mM citrate buffer,pH6.0,or PH8.0 EDTA repair liquid for 20 mins is required for the staining of formalin/paraffin sections.) Optimal working dilutions must be determined by end user.	

Storage

12 months from date of receipt, -20℃ as supplied.

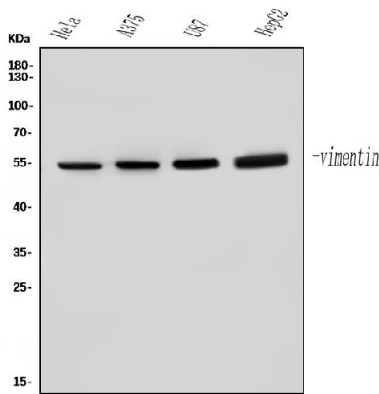
Background Information

The VIM gene was one of many that Gieser and Swaroop(1992) recovered from a subtracted cDNA library for retinal pigment epithelium. Vimentin gene express in human lymphocytes and in Burkitt's lymphoma cells. Vimentin is secreted by activated macrophages. The gene encoding human vimentin is located on the short arm of chromosome 10.

Reference

Anti-Vimentin/VIM Antibody (Clone#V9)被引用在163文献中。

Selected Validation Data



Western blot analysis of anti-Vimentin antibody (BM0135). The sample well of each lane was loaded with 30 ug of sample under reducing conditions.

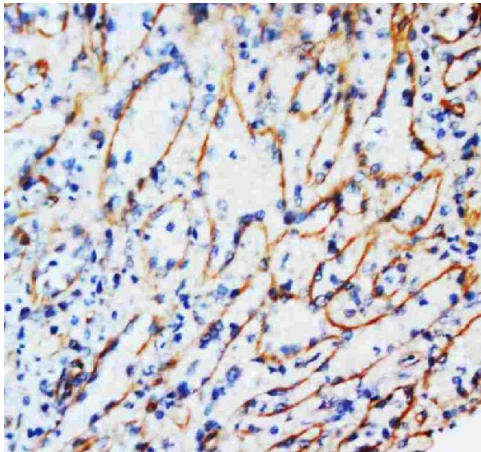
Lane 1: human HeLa whole cell lysates,

Lane 2: human A375 whole cell lysates,

Lane 3: human U87 whole cell lysates,

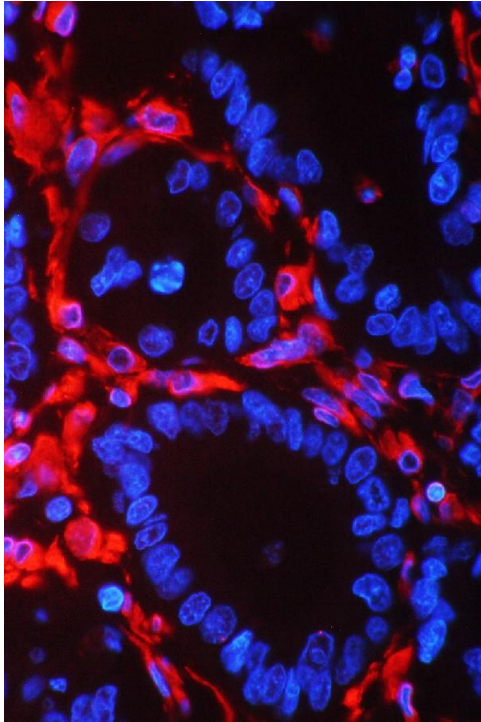
Lane 4: human HepG2 whole cell lysates.

After electrophoresis, proteins were transferred to a membrane. Then the membrane was incubated with rabbit anti-Vimentin antigen affinity purified monoclonal antibody (BM0135) and probed with a goat anti-rabbit IgG-HRP secondary antibody (Catalog # BA1054). The signal is developed using ECL Plus Western Blotting Substrate (Catalog # AR1197). A specific band was detected for Vimentin at approximately 56 kDa. The expected band size for Vimentin is at 54 kDa.



IHC analysis of Vimentin using anti-Vimentin antibody (BM0135).

Vimentin was detected in a paraffin-embedded section of human mammary cancer tissue. The tissue section was developed using HRP Conjugated rabbit IgG Super Vision Assay Kit (Catalog # SV0002) with DAB (Catalog # AR1027) as the chromogen.



IF analysis of Vimentin using anti-Vimentin antibody (BM0135).

Vimentin was detected in a paraffin-embedded section of human intestinal cancer tissue. Dylight594-conjugated Anti-rabbit IgG Secondary Antibody (red)(Catalog#BA1142) was used as secondary antibody. The section was counterstained with DAPI (Catalog # AR1176) (Blue).