

Basic Information

Product Name	Anti-MAP2 Antibody (Clone#HM-2)	
Gene Name	MAP2	
Source	Mouse	
Clonality	Monoclonal	
Isotype	IgG1	
Species Reactivity	human, mouse, rat	
Tested Application	WB, IHC	
Contents	200ug/ml antibody with PBS , 0.02% NaN ₃ , 1mg BSA	
Immunogen	Rat brain microtubule-associated proteins(MAPs).	
Concentration	200ug/ml	
Purification	Ascites	
Observed MW	280 kDa	
Dilution Ratios	Western blot (WB): 1:500-2000 Immunohistochemistry (IHC): 1:50-400 (Boiling the paraffin sections in 10mM citrate buffer,pH6.0,or PH8.0 EDTA repair liquid for 20 mins is required for the staining of formalin/paraffin sections.) Optimal working dilutions must be determined by end user.	

Storage

12 months from date of receipt, -20℃ as supplied.

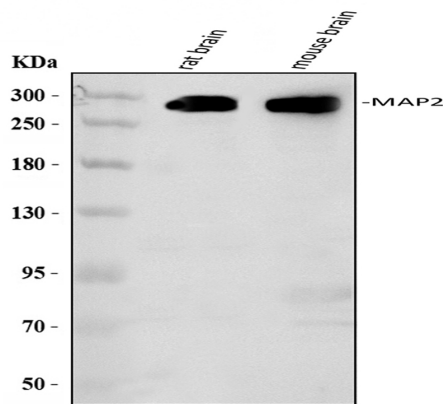
Background Information

MAP2, a 280-kD protein, is highly concentrated in neuronal somata and dendrites. Microtubule-associated protein 2(MAP2)is a neurosteroid receptor. MAP2 gene contains 19 exons, and located in segment 2q34-q35. The transgenic MAP2c was present in dendrites but not in axons but transgenic MAP2c messenger RNA was limited to cell bodies.

Reference

Anti-MAP2 Antibody (Clone#HM-2)被引用在35文献中。

Selected Validation Data

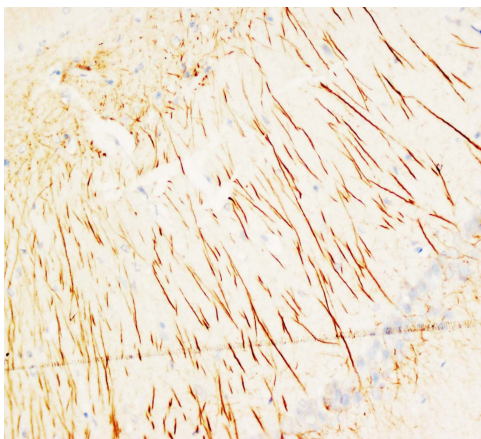


Western blot analysis of anti-MAP2 antibody (BM1243). The sample well of each lane was loaded with 30 ug of sample under reducing conditions.

Lane 1: rat brain tissue lysates,

Lane 2: mouse brain tissue lysates.

After electrophoresis, proteins were transferred to a membrane. Then the membrane was incubated with rabbit anti-MAP2 antigen affinity purified monoclonal antibody (BM1243) at a dilution of 1:1000 and probed with a goat anti-rabbit IgG-HRP secondary antibody (Catalog # BA1054). The signal is developed using ECL Plus Western Blotting Substrate (Catalog # AR1197). A specific band was detected for MAP2 at approximately 280 kDa. The expected band size for MAP2 is at 200 kDa.



IHC analysis of MAP2 using anti-MAP2 antibody (BM1243) .

MAP2 was detected in a paraffin-embedded section of rat brain tissue. The tissue section was incubated with rabbit anti-MAP2 Antibody (BM1243) at a dilution of 1:200 and developed using HRP Conjugated Rabbit IgG Super Vision Assay Kit (Catalog # SV0002) with DAB (Catalog # AR1027) as the chromogen.