

## Basic Information

Product Name	Anti-TAU/MAPT Antibody (Clone#TAU-2)	
Gene Name	MAPT	
Source	Mouse	
Clonality	Monoclonal	
Isotype	IgG1	
Species Reactivity	human, bovine	
Tested Application	WB, IHC	
Contents	200ug/ml antibody with PBS , 0.02% NaN <sub>3</sub> , 1mg BSA and 50% glycerol.	
Immunogen	Bovine microtubule-associated proteins(MAPs).	
Concentration	200ug/ml	
Purification	Ascites	
Observed MW	50-80 kDa	
Dilution Ratios	Western blot (WB): 1:500-2000 Immunohistochemistry (IHC): 1:50-400 (Boiling the paraffin sections in 10mM citrate buffer,pH6.0,or PH8.0 EDTA repair liquid for 20 mins is required for the staining of formalin/paraffin sections.) Optimal working dilutions must be determined by end user.	

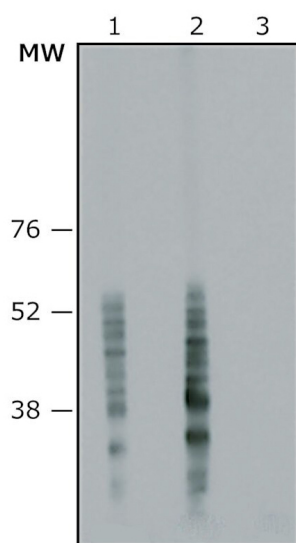
## Storage

12 months from date of receipt, -20°C as supplied.

## Background Information

The microtubule-associated proteins(MAPs) coassemble with tubulin into microtubules in vitro. Microtubule-associated protein tau appears to be enriched in axons. Tau are composed of 352 to 441 amino acids. The isoforms differ from each other by the presence or absence of 29-amino acid or 58-amino acid inserts located in the N terminus and a 31-amino repeat located in the C terminus. tau is important in establishing and maintaining neuronal morphology and is a major component of the neurofibrillary tangles(NFTs) characteristic of Alzheimer's brain. Microtubule-associated protein tau(MTBT1) is mapped to chromosome 17q21.

## Selected Validation Data



Anti-Tau antibody (monoclonal), BM1604, Western blotting  
Lane 1: Bovine Brain Tissue Lysate (1:1000 antibody)  
Lane 2: Bovine Brain Tissue Lysate (1:2000 antibody)  
Lane 3: Negative control