

## Basic Information

<b>Product Name</b>	Anti-Glucagon/GCG Antibody (Clone#K79bB10)
<b>Gene Name</b>	GCG
<b>Source</b>	Mouse
<b>Clonality</b>	Monoclonal
<b>Isotype</b>	IgG1
<b>Species Reactivity</b>	human, mouse, rat, rabbit
<b>Tested Application</b>	IHC, IF
<b>Contents</b>	200ug/ml antibody with PBS , 0.02% NaN <sub>3</sub> , 1mg BSA
<b>Immunogen</b>	Polymerized porcine glucagon.
<b>Concentration</b>	200ug/ml
<b>Purification</b>	Ascites
<b>Dilution Ratios</b>	Immunohistochemistry (IHC):1:50-100 Immunofluorescence (IF): 1:50-100

## Storage

12 months from date of receipt, -20°C as supplied.

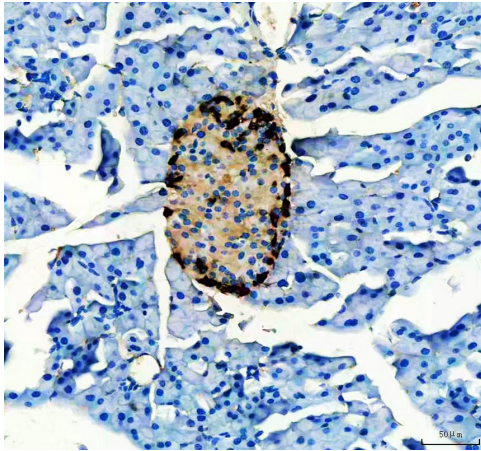
## Background Information

Glucagon is a member of a multigene family that includes secretin. Glucagon is a 29-amino acid pancreatic hormone that counteracts the glucose-lowering action of insulin by stimulating glycogenolysis and gluconeogenesis. The human glucagon gene is approximately 9.4 kb long and contains 6 exons and 5 introns, and assigned to 2q36-2q37.

## Reference

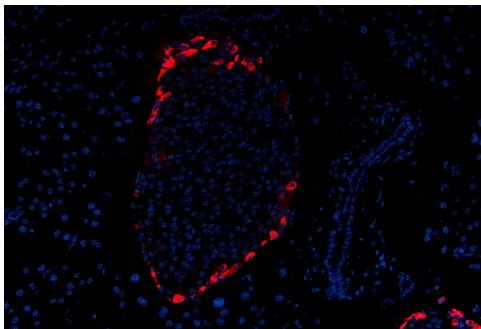
Anti-Glucagon/GCG Antibody (Clone#K79bB10)被引用在17文献中。

## Selected Validation Data



IHC analysis of Glucagon/GCG using anti-Glucagon/GCG antibody (BM1621).

Glucagon/GCG was detected in a paraffin-embedded section of mouse pancreas tissue. The tissue section was incubated with mouse anti-Glucagon/GCG Antibody (BM1621) at a dilution of 1:200 and developed using HRP Conjugated mouse IgG Super Vision Assay Kit (Catalog # SV0001) with DAB (Catalog # AR1027) as the chromogen.



IF analysis of Glucagon/GCG using anti-Glucagon/GCG antibody (BM1621).

Glucagon/GCG was detected in a paraffin-embedded section of mouse pancreas tissue. The tissue section was incubated with mouse anti-Glucagon/GCG Antibody (BM1621) at a dilution of 1:100. Dylight594-conjugated Anti-mouse IgG Secondary Antibody (red) (Catalog # BA1141) was used as secondary antibody. The section was counterstained with DAPI (Catalog # AR1176) (Blue).