

Basic Information

Product Name	Anti-Actin Antibody (Clone#BE-1)	
Gene Name	ACTA1	
Source	Rabbit	
Clonality	Monoclonal	
Isotype	IgG	
Species Reactivity	human, mouse, rat, chicken	
Tested Application	WB, IHC, ICC/IF, IP, FCM	
Contents	500 ug/ml; Rabbit IgG in phosphate buffered saline, pH 7.4, 150mM NaCl, 0.02% sodium azide, 0.4-0.5 mg/ml BSA and 50% glycerol.	
Immunogen	A synthesized peptide derived from human Actin	
Concentration	500 ug/ml	
Purification	Affinity-chromatography	
Observed MW	42 kDa	
Dilution Ratios	Western blot (WB):	1:1000-5000
	Immunohistochemistry (IHC):	1:50-200
	Immunocytochemistry/Immunofluorescence (ICC/IF):	1:50-200
	ImmunoPrecipitation (IP):	1:20
	Flow Cytometry (FCM):	1:20

Storage

12 months from date of receipt, -20°C as supplied.

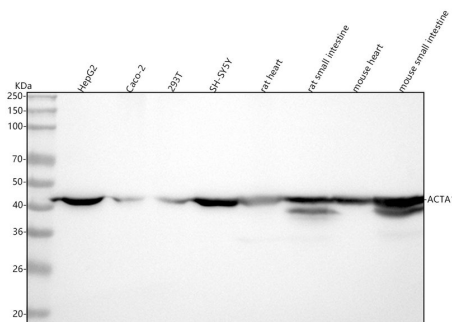
Background Information

Actin, a highly conserved protein, is a major component of both the cytoskeletal and contractile structures in the cell types. It varies in amount, being related to the type of differentiation and to the functional state of cells and tissues. The actins exhibit over 90% sequence homology, but each isoform has a unique NH₂-terminal sequence. The isoforms are comprised of three alpha-actin, one beta-actin, two gamma-actin. Because the amino acid sequence of the C-terminal is the same for almost all actins, this antibody has been raised using a synthetic peptide corresponding to the C-terminal 11 residues.

Reference

Anti-Actin Antibody (Clone#BE-1)被引用在2文献中。

Selected Validation Data



Western blot analysis of anti-Actin antibody (BM3872). The sample well of each lane was loaded with 30 ug of sample under reducing conditions.

Lane 1: human HepG2 whole cell lysates,

Lane 2: human Caco-2 whole cell lysates,

Lane 3: human 293T whole cell lysates,

Lane 4: human SH-SY5Y whole cell lysates,

Lane 5: rat heart tissue lysates,

Lane 6: rat small intestine tissue lysates,

Lane 7: mouse heart tissue lysates,

Lane 8: mouse small intestine tissue lysates.

After electrophoresis, proteins were transferred to a membrane. Then the membrane was incubated with rabbit anti-Actin antigen affinity purified monoclonal antibody (BM3872) at a dilution of 1:1000 and probed with a goat anti-rabbit IgG-HRP secondary antibody (Catalog # BA1054). The signal is developed using ECL Plus Western Blotting Substrate (Catalog # AR1197). A specific band was detected for Actin at approximately 42 kDa. The expected band size for Actin is at 42 kDa.