

Basic Information

Product Name	Anti-Beta Tubulin/TUBB Antibody (Clone#BI-20)		
Gene Name	TUBB		
Source	Rabbit		
Clonality	Monoclonal		
Isotype	IgG		
Species Reactivity	human, mouse, rat		
Tested Application	WB, IHC, ICC/IF, FCM		
Contents	500 ug/ml; Rabbit IgG in phosphate buffered saline, pH 7.4, 150mM NaCl, 0.02% sodium azide, 0.4-0.5 mg/ml BSA and 50% glycerol.		
Immunogen	A synthesized peptide derived from human beta Tubulin		
Purification	Affinity-chromatography		
Observed MW	55 kDa		
Dilution Ratios	Western blot (WB):	1:1000-5000	
	Immunohistochemistry (IHC):	1:50-200	
	Immunocytochemistry/Immunofluorescence (ICC/IF):	1:50-200	
	Flow Cytometry (FCM):	1:20	

Storage

12 months from date of receipt, -20°C as supplied. 6 months 2 to 8°C after reconstitution. Avoid repeated freezing and thawing.

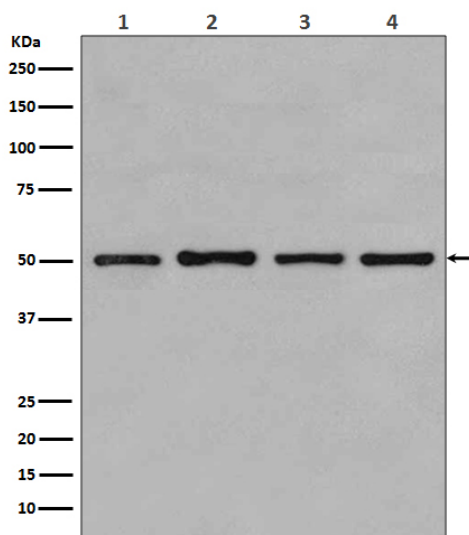
Background Information

Tubulin beta chain is a protein that in humans is encoded by the TUBB gene. This gene encodes a beta tubulin protein. This protein forms a dimer with alpha tubulin and acts as a structural component of microtubules. Mutations in this gene cause cortical dysplasia, complex, with other brain malformations 6. Alternative splicing results in multiple splice variants. There are multiple pseudogenes for this gene on chromosomes 1,6,7,8,9, and 13.

Reference

Anti-Beta Tubulin/TUBB Antibody (Clone#BI-20)被引用在6文献中。

Selected Validation Data



Western blot analysis of beta Tubulin expression in HeLa cell lysates.