

## Basic Information

<b>Product Name</b>	Anti-Bcl-XL/BCL2L1 Antibody (Clone#AOD-2)	
<b>Gene Name</b>	BCL2L1	
<b>Source</b>	Rabbit	
<b>Clonality</b>	Monoclonal	
<b>Isotype</b>	IgG	
<b>Species Reactivity</b>	human, mouse, rat	
<b>Tested Application</b>	WB, IHC, ICC/IF, IP, FCM	
<b>Contents</b>	500 ug/ml; Rabbit IgG in phosphate buffered saline, pH 7.4, 150mM NaCl, 0.02% sodium azide, 0.4-0.5 mg/ml BSA and 50% glycerol.	
<b>Immunogen</b>	A synthesized peptide derived from human Bcl-XL	
<b>Concentration</b>	500 ug/ml	
<b>Purification</b>	Affinity-chromatography	
<b>Observed MW</b>	26 kDa、19 kDa	
<b>Dilution Ratios</b>	Western blot (WB):	1:500-2000
	Immunohistochemistry (IHC):	1:50-200
	Immunocytochemistry/Immunofluorescence (ICC/IF):	1:50-200
	ImmunoPrecipitation (IP):	1:50
	Flow Cytometry (FCM):	1:50

## Storage

12 months from date of receipt, -20°C as supplied. 6 months 2 to 8°C after reconstitution. Avoid repeated freezing and thawing.

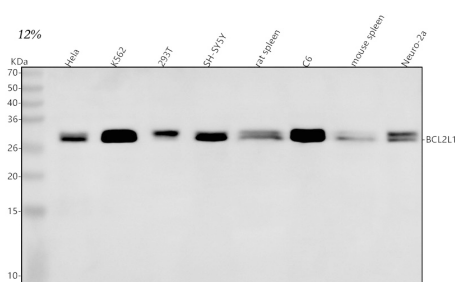
## Background Information

Bcl-2-like protein 1 is a protein that in humans is encoded by the BCL2L1 gene. The protein encoded by this gene belongs to the BCL-2 protein family. BCL-2 family members form hetero- or homodimers and act as anti- or pro-apoptotic regulators that are involved in a wide variety of cellular activities. The proteins encoded by this gene are located at the outer mitochondrial membrane, and have been shown to regulate outer mitochondrial membrane channel (VDAC) opening. VDAC regulates mitochondrial membrane potential, and thus controls the production of reactive oxygen species and release of cytochrome C by mitochondria, both of which are the potent inducers of cell apoptosis. Alternative splicing results in multiple transcript variants encoding two different isoforms. The longer isoform (Bcl-xL) acts as an apoptotic inhibitor and the shorter form (Bcl-xS) acts as an apoptotic activator.

## Reference

Anti-Bcl-XL/BCL2L1 Antibody (Clone#AOD-2)被引用在1文献中。

## Selected Validation Data



Western blot analysis of anti-Bcl-XL/BCL2L1 antibody (BM3956). The sample well of each lane was loaded with 30 ug of sample under reducing conditions.

Lane 1: human Hela whole cell lysates,

Lane 2: human K562 whole cell lysates,

Lane 3: human 293T whole cell lysates,

Lane 4: human SH-SY5Y whole cell lysates,

Lane 5: rat spleen tissue lysates,

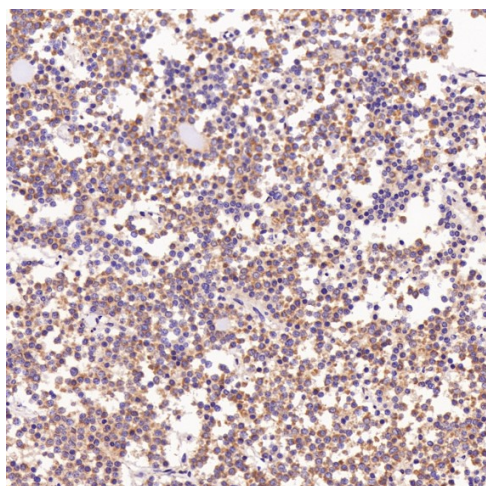
Lane 6: rat C6 whole cell lysates,

Lane 7: mouse spleen tissue lysates,

Lane 8: mouse Neuro-2a whole cell lysates.

After electrophoresis, proteins were transferred to a membrane.

Then the membrane was incubated with rabbit anti-Bcl-XL/BCL2L1 antigen affinity purified monoclonal antibody (BM3956) at a dilution of 1:1000 and probed with a goat anti-rabbit IgG-HRP secondary antibody (Catalog # BA1054). The signal is developed using ECL Plus Western Blotting Substrate (Catalog # AR1197). A specific band was detected for Bcl-XL/BCL2L1 at approximately 30 kDa. The expected band size for Bcl-XL/BCL2L1 is at 26 kDa.



Immunohistochemical analysis of paraffin-embedded Human pituitary tumor, using the Antibody.

Product datasheet  
**Anti-Bcl-XL/BCL2L1 Antibody**  
**(Clone#AOD-2)**

**Catalog Number: BM3956**

**BOSTER**<sup>®</sup>

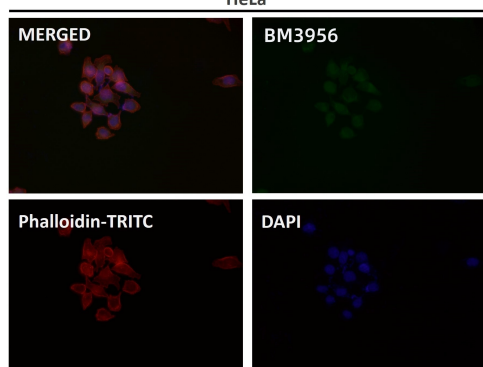
antibody and ELISA experts

**BOSTER BIOLOGICAL TECHNOLOGY**

Building C21, 3rd to 5th Floors, Optics Valley Biopharmaceutical Accelerator,  
East Lake High-Tech Development Zone, Wuhan.

**Web:** [www.boster.com](http://www.boster.com) **Phone:** 027-67845390/1/2 **Email:** [boster@boster.com](mailto:boster@boster.com)

HeLa



Immunofluorescent analysis using the Antibody.