

Basic Information

Product Name	Anti-HDAC2 Antibody (Clone#AAE-8)	
Gene Name	HDAC2	
Source	Rabbit	
Clonality	Monoclonal	
Isotype	IgG	
Species Reactivity	human, mouse, rat	
Tested Application	WB, IHC, ICC/IF, IP, FCM	
Contents	500 ug/ml; Rabbit IgG in phosphate buffered saline, pH 7.4, 150mM NaCl, 0.02% sodium azide, 0.4-0.5 mg/ml BSA and 50% glycerol.	
Immunogen	A synthesized peptide derived from human HDAC2	
Concentration	500 ug/ml	
Purification	Affinity-chromatography	
Observed MW	60 kDa	
Dilution Ratios	Western blot (WB):	1:500-2000
	Immunohistochemistry (IHC):	1:50-200
	Immunocytochemistry/Immunofluorescence (ICC/IF):	1:50-200
	ImmunoPrecipitation (IP):	1:30
	Flow Cytometry (FCM):	1:50

Storage

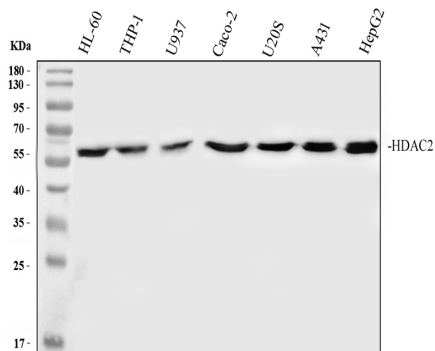
12 months from date of receipt, -20°C as supplied.

Background Information

Histone deacetylase 2 is an enzyme that in humans is encoded by the HDAC2 gene. This gene product belongs to the histone deacetylase family. Histone deacetylases act via the formation of large multiprotein complexes and are responsible for the deacetylation of lysine residues on the N-terminal region of the core histones(H2A, H2B, H3 and H4). This protein also forms transcriptional repressor complexes by associating with many different proteins, including YY1, a mammalian zinc-finger transcription factor. Thus it plays an important role in transcriptional regulation, cell cycle progression and developmental events. Betz et al.(1998) performed PCR using HDAC2-specific primers to screen a somatic cell hybrid mapping panel. They mapped the HDAC2 gene to human chromosome 6q21, a region of the

genome altered in some cancers, including retinoblastoma.

Selected Validation Data



Western blot analysis of HDAC2 using anti-HDAC2 antibody (BM3967). The sample well of each lane was loaded with 30 ug of sample under reducing conditions.

Lane 1: human HL-60 whole cell lysates,

Lane 2: human THP-1 whole cell lysates,

Lane 3: human U937 whole cell lysates,

Lane 4: human Caco-2 whole cell lysates,

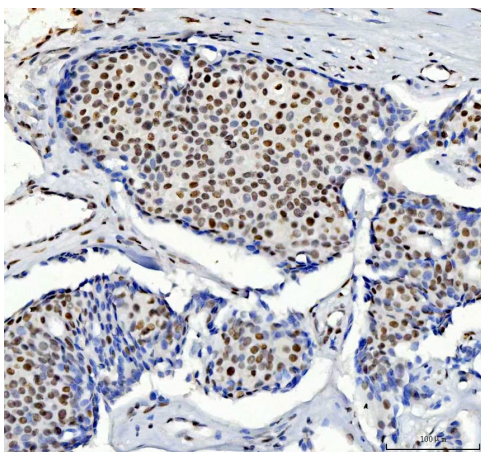
Lane 5: human U2OS whole cell lysates,

Lane 6: human A431 whole cell lysates,

Lane 7: human HepG2 whole cell lysates.

After electrophoresis, proteins were transferred to a membrane.

Then the membrane was incubated with rabbit anti-HDAC2 antigen affinity purified monoclonal antibody (BM3967) at a dilution of 1:1000 and probed with a goat anti-rabbit IgG-HRP secondary antibody (Catalog # BA1054). The signal is developed using ECL Plus Western Blotting Substrate (Catalog # AR1197). A specific band was detected for HDAC2 at approximately 60 kDa. The expected band size for HDAC2 is at 55 kDa.



IHC analysis of HDAC2 using anti-HDAC2 antibody (BM3967).

HDAC2 was detected in a paraffin-embedded section of human breast cancer tissue. The tissue section was incubated with rabbit anti-HDAC2 Antibody (BM3967) at a dilution of 1:200 and developed using HRP Conjugated Rabbit IgG Super Vision Assay Kit (Catalog # SV0002) with DAB (Catalog # AR1027) as the chromogen.