

## Basic Information

Product Name	Anti-TLR2 Antibody (Clone#ADH-20)
Gene Name	TLR2
Source	Rabbit
Clonality	Monoclonal
Isotype	IgG
Species Reactivity	human, mouse, rat
Tested Application	WB
Contents	500 ug/ml; Rabbit IgG in phosphate buffered saline, pH 7.4, 150mM NaCl, 0.02% sodium azide, 0.4-0.5 mg/ml BSA and 50% glycerol.
Immunogen	A synthesized peptide derived from human TLR2
Concentration	500 ug/ml
Observed MW	90 kDa
Dilution Ratios	Western blot (WB):1:500-2000

## Storage

12 months from date of receipt, -20°C as supplied.

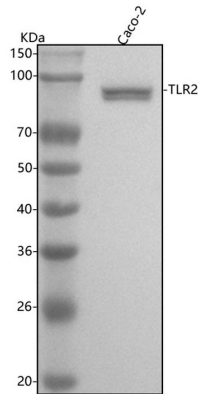
## Background Information

Members of the Toll-like receptor (TLR) family, named for the closely related Toll receptor in *Drosophila*, play a pivotal role in innate immune responses (1-3). TLRs recognize conserved motifs found in various pathogens and mediate defense responses. Triggering of the TLR pathway leads to the activation of NF- $\kappa$ B and subsequent regulation of immune and inflammatory genes. The TLRs and members of the IL-1 receptor family share a conserved stretch of approximately 200 amino acids known as the TIR domain. Upon activation, TLRs associate with a number of cytoplasmic adaptor proteins containing TIR domains including MyD88 (myeloid differentiation factor), MAL/TIRAP (MyD88-adaptor-like/TIR-associated protein), TRIF (Toll-receptor-associated activator of interferon), and TRAM (Toll-receptor-associated molecule). This association leads to the recruitment and activation of IRAK1 and IRAK4, which form a complex with TRAF6 to activate TAK1 and IKK. Activation of IKK leads to the degradation of I $\kappa$ B that normally maintains NF- $\kappa$ B inactivity by sequestering it in the cytoplasm.

## Reference

Anti-TLR2 Antibody (Clone#ADH-20)被引用在7文献中。

## Selected Validation Data



Western blot analysis of anti-TLR2 antibody (BM4001). The sample well of each lane was loaded with 30 ug of sample under reducing conditions.

Lane 1: human Caco-2 whole cell lysates.

After electrophoresis, proteins were transferred to a membrane. Then the membrane was incubated with rabbit anti-TLR2 antigen affinity purified monoclonal antibody (BM4001) at a dilution of 1:1000 and probed with a goat anti-rabbit IgG-HRP secondary antibody (Catalog # BA1054). The signal is developed using ECL Plus Western Blotting Substrate (Catalog # AR1197). A specific band was detected for TLR2 at approximately 90 kDa. The expected band size for TLR2 is at 90 kDa.