

## Basic Information

<b>Product Name</b>	Anti-HO-1/HMOX1 Antibody (Clone#AEG-8)		
<b>Gene Name</b>	HMOX1		
<b>Source</b>	Rabbit		
<b>Clonality</b>	Monoclonal		
<b>Isotype</b>	IgG		
<b>Species Reactivity</b>	human, mouse		
<b>Tested Application</b>	WB, IHC, IP, FCM		
<b>Contents</b>	500 ug/ml; Rabbit IgG in phosphate buffered saline, pH 7.4, 150mM NaCl, 0.02% sodium azide, 0.4-0.5 mg/ml BSA and 50% glycerol.		
<b>Immunogen</b>	A synthesized peptide derived from human Heme Oxygenase 1		
<b>Concentration</b>	500 ug/ml		
<b>Purification</b>	Affinity-chromatography		
<b>Observed MW</b>	33 kDa		
<b>Dilution Ratios</b>	Western blot (WB):	1:500-2000	
	Immunohistochemistry (IHC):	1:50-200	
	ImmunoPrecipitation (IP):	1:20	
	Flow Cytometry (FCM):	1:20	

## Storage

12 months from date of receipt, -20°C as supplied. 6 months 2 to 8°C after reconstitution. Avoid repeated freezing and thawing.

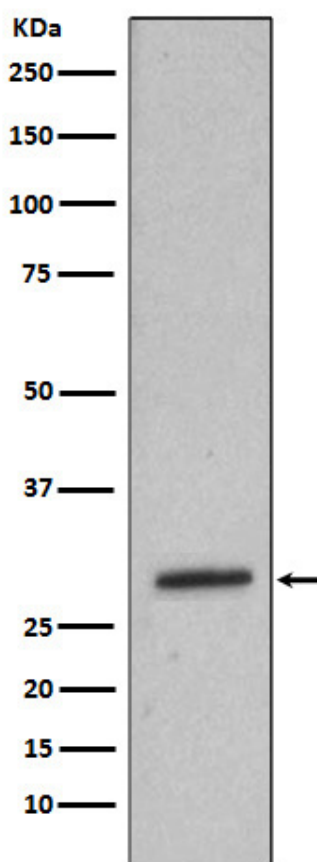
## Background Information

HMOX1 (heme oxygenase (decycling) 1), also known as HO-1, is a human gene that encodes for the enzyme heme oxygenase 1. It is an essential enzyme in heme catabolism, it cleaves heme to form biliverdin. HMOX1 belongs to the heme oxygenase family. The HMOX1 gene is located on the long (q) arm of chromosome 22 at position 12.3, from base pair 34,101,636 to base pair 34,114,748. HMOX1, an essential enzyme in heme catabolism, cleaves heme to form biliverdin, which is subsequently converted to bilirubin by biliverdin reductase, and carbon monoxide, a putative neurotransmitter. HMOX1 activity is induced by its substrate heme and by various nonheme substances.

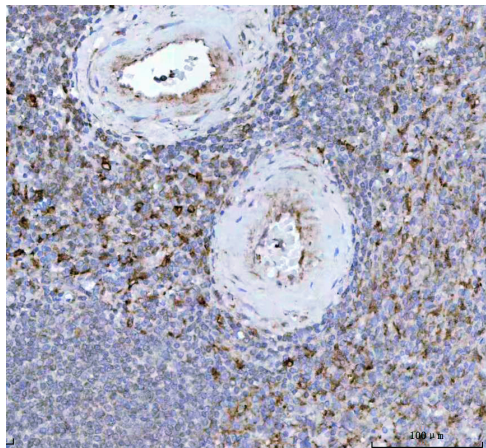
## Reference

Anti-HO-1/HMOX1 Antibody (Clone#AEG-8)被引用在19文献中。

## Selected Validation Data



Western blot analysis of Heme Oxygenase 1 in mouse spleen lysate.



IHC analysis of HO-1/HMOX1 using anti-HO-1/HMOX1 antibody (BM4010) .

HO-1/HMOX1 was detected in a paraffin-embedded section of human spleen tissue. The tissue section was incubated with rabbit anti-HO-1/HMOX1 Antibody (BM4010) at a dilution of 1:200 and developed using HRP Conjugated Rabbit IgG Super Vision Assay Kit (Catalog # SV0002) with DAB (Catalog # AR1027) as the chromogen.