

## Basic Information

<b>Product Name</b>	Anti-Cytokeratin 5/KRT5 Antibody (Clone#AGD-11)		
<b>Gene Name</b>	KRT5		
<b>Source</b>	Rabbit		
<b>Clonality</b>	Monoclonal		
<b>Isotype</b>	IgG		
<b>Species Reactivity</b>	human, mouse		
<b>Tested Application</b>	WB, IHC, ICC/IF		
<b>Contents</b>	500 ug/ml; Rabbit IgG in phosphate buffered saline, pH 7.4, 150mM NaCl, 0.02% sodium azide, 0.4-0.5 mg/ml BSA and 50% glycerol.		
<b>Immunogen</b>	A synthesized peptide derived from human Cytokeratin 5 (C-term)		
<b>Concentration</b>	500 ug/ml		
<b>Purification</b>	Affinity-chromatography		
<b>Observed MW</b>	62 kDa		
<b>Dilution Ratios</b>	Western blot (WB):	1:500-2000	
	Immunohistochemistry (IHC):	1:50-200	
	Immunocytochemistry/Immunofluorescence (ICC/IF):	1:50-200	

## Storage

12 months from date of receipt, -20°C as supplied.

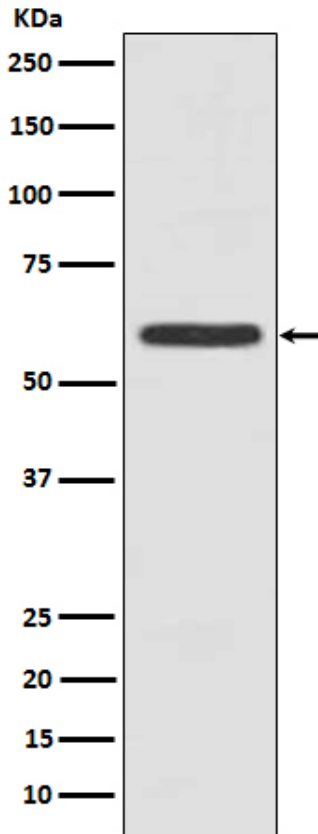
## Background Information

Cytokeratin 5, also known as KRT5, K5, or CK5, is a protein that is encoded in humans by the KRT5 gene. The protein encoded by this gene is a member of the keratin gene family. The type II cytokeratins consist of basic or neutral proteins which are arranged in pairs of heterotypic keratin chains coexpressed during differentiation of simple and stratified epithelial tissues. This type II cytokeratin is specifically expressed in the basal layer of the epidermis with family member KRT14. Mutations in these genes have been associated with a complex of diseases termed epidermolysis bullosa simplex. The type II cytokeratins are clustered in a region of chromosome 12q12-q13.

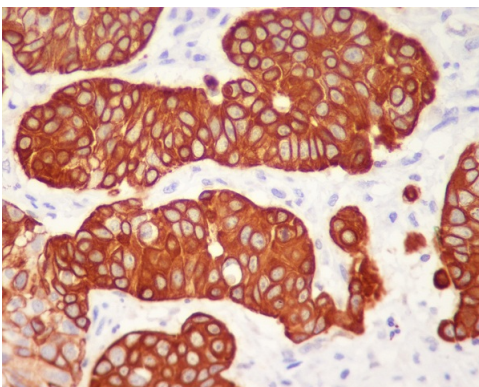
## Reference

Anti-Cytokeratin 5/KRT5 Antibody (Clone#AGD-11)被引用在1文献中。

## Selected Validation Data



Western blot analysis of Cytokeratin 5 expression in A431 cell lysate.



Immunohistochemical analysis of paraffin-embedded human urothelial carcinoma, using Cytokeratin 5 (C-term) Antibody.