

## Basic Information

Product Name	Anti-Actin/ACTA1 Antibody (Clone#C-1)	
Gene Name	ACTA1	
Source	Rabbit	
Clonality	Monoclonal	
Isotype	IgG	
Species Reactivity	human, mouse, rat	
Tested Application	WB, IHC, ICC/IF, IP, FCM	
Contents	500 ug/ml; Rabbit IgG in phosphate buffered saline, pH 7.4, 150mM NaCl, 0.02% sodium azide, 0.4-0.5 mg/ml BSA and 50% glycerol.	
Immunogen	A synthesized peptide derived from human Actin (Alpha-Actin)	
Concentration	500 ug/ml	
Purification	Affinity-chromatography	
Observed MW	42 kDa	
Dilution Ratios	Western blot (WB):	1:500-2000
	Immunohistochemistry (IHC):	1:50-200
	Immunocytochemistry/Immunofluorescence (ICC/IF):	1:50-200
	ImmunoPrecipitation (IP):	1:20
	Flow Cytometry (FCM):	1:20

## Storage

12 months from date of receipt, -20°C as supplied.

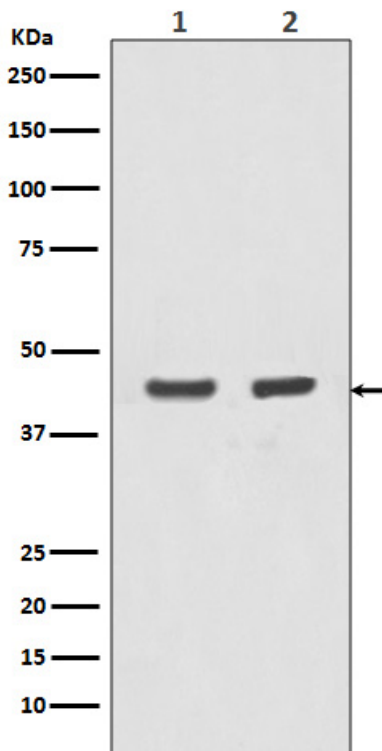
## Background Information

Actin, a highly conserved protein, is a major component of both the cytoskeletal and contractile structures in the cell types. It varies in amount, being related to the type of differentiation and to the functional state of cells and tissues. The actins exhibit over 90% sequence homology, but each isoform has a unique NH<sub>2</sub>-terminal sequence. The isoforms are comprised of three alpha-actin, one beta-actin, two gamma-actin. Because the amino acid sequence of the C-terminal is the same for almost all actins, this antibody has been raised using a synthetic peptide corresponding to the C-terminal 11 residues.

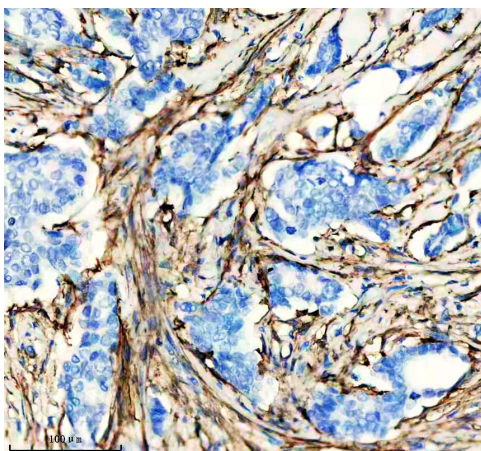
## Reference

Anti-Actin/ACTA1 Antibody (Clone#C-1)被引用在2文献中。

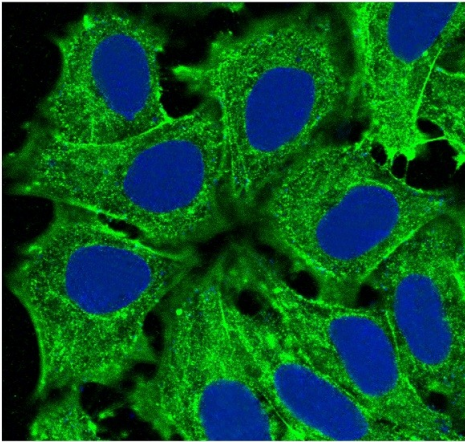
## Selected Validation Data



Western blot analysis of Actin (Alpha-Actin) expression in (1) A431 cell lysate; (2) MCF-7 cell lysate.



IHC analysis of ACTA1 using anti-ACTA1 antibody (BM4047) . ACTA1 was detected in a paraffin-embedded section of human breast cancer tissue. The tissue section was incubated with rabbit anti-ACTA1 Antibody (BM4047) at a dilution of 1:200 and developed using HRP Conjugated Rabbit IgG Super Vision Assay Kit (Catalog # SV0002) with DAB (Catalog # AR1027) as the chromogen.



Immunofluorescent analysis of HeLa cells, using Actin (Alpha-Actin) Antibody .