

Basic Information

Product Name	Anti-PSMA/GCPII/FOLH1 Antibody (Clone#BBD-6)		
Gene Name	FOLH1		
Source	Rabbit		
Clonality	Monoclonal		
Isotype	IgG		
Species Reactivity	human		
Tested Application	WB, IHC, ICC/IF, IP		
Contents	500 ug/ml; Rabbit IgG in phosphate buffered saline, pH 7.4, 150mM NaCl, 0.02% sodium azide, 0.4-0.5 mg/ml BSA and 50% glycerol.		
Immunogen	A synthesized peptide derived from human PSMA		
Concentration	500 ug/ml		
Purification	Affinity-chromatography		
Observed MW	100 kDa		
Dilution Ratios	Western blot (WB): 1:500-2000 Immunohistochemistry (IHC):1:50-200 ImmunoPrecipitation (IP): 1:20		

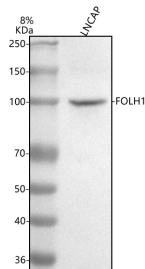
Storage

12 months from date of receipt, -20°C as supplied.

Reference

Anti-PSMA/GCPII/FOLH1 Antibody (Clone#BBD-6)被引用在1文献中。

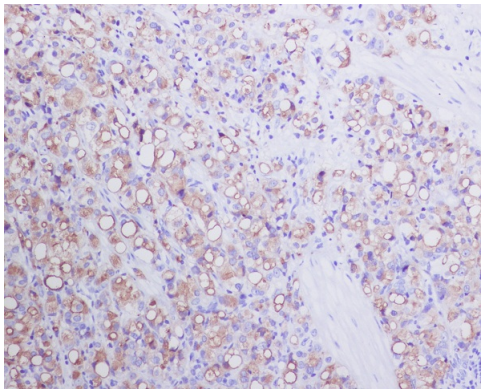
Selected Validation Data



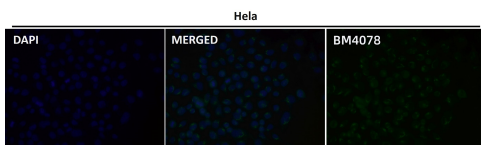
Western blot analysis of anti-PSMA/GCPII/FOLH1 antibody (BM4078). The sample well of each lane was loaded with 30 ug of sample under reducing conditions.

Lane 1: human LNCAP whole cell lysates.

After electrophoresis, proteins were transferred to a membrane. Then the membrane was incubated with rabbit anti-PSMA/GCPII/FOLH1 antigen affinity purified monoclonal antibody (BM4078) at a dilution of 1:1000 and probed with a goat anti-rabbit IgG-HRP secondary antibody (Catalog # BA1054). The signal is developed using ECL Plus Western Blotting Substrate (Catalog # AR1197). A specific band was detected for PSMA/GCPII/FOLH1 at approximately 100 kDa. The expected band size for PSMA/GCPII/FOLH1 is at 110 kDa.



Immunohistochemical analysis of paraffin-embedded human prostate carcinoma, using PSMA Antibody.



Immunofluorescent analysis using the Antibody.