

## Basic Information

<b>Product Name</b>	Anti-HLA-A Antibody (Clone#BBI-8)	
<b>Gene Name</b>	HLA-A	
<b>Source</b>	Rabbit	
<b>Clonality</b>	Monoclonal	
<b>Isotype</b>	IgG	
<b>Species Reactivity</b>	human	
<b>Tested Application</b>	WB, IHC, ICC/IF, IP, FCM	
<b>Contents</b>	500 ug/ml; Rabbit IgG in phosphate buffered saline, pH 7.4, 150mM NaCl, 0.02% sodium azide, 0.4-0.5 mg/ml BSA and 50% glycerol.	
<b>Immunogen</b>	A synthesized peptide derived from human MHC class 1	
<b>Concentration</b>	500 ug/ml	
<b>Purification</b>	Affinity-chromatography	
<b>Observed MW</b>	41 kDa	
<b>Dilution Ratios</b>	Western blot (WB):	1:500-2000
	Immunohistochemistry (IHC):	1:50-200
	Immunocytochemistry/Immunofluorescence (ICC/IF):	1:50-200
	ImmunoPrecipitation (IP):	1:20
	Flow Cytometry (FCM):	1:20

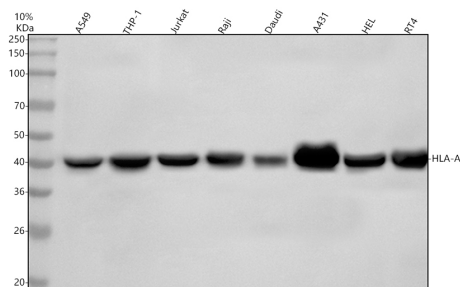
## Storage

12 months from date of receipt, -20°C as supplied.

## Background Information

HLA-A, namely HLA A, is a group of human leukocyte antigens (HLA) that are coded for by the HLA-A locus, which is located at human chromosome 6p21.3. HLA is simply the major histocompatibility complex (MHC) specific to humans. HLA-A is one of three major types of human MHC class I cell surface receptors. The others are HLA-B and HLA-C. And it is critical to the cytotoxic t-cell controlled immune response to viruses and other intracellular pathogens. Because each HLA-A gene has a high affinity for slightly different peptides, certain HLA-As are associated with increased risk, more rapid progression, and/or increased severity of many diseases. For similar reasons, HLA-A matching is essential to successful tissue transplants.

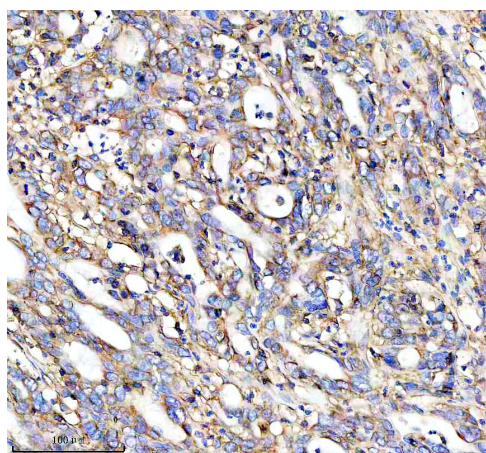
## Selected Validation Data



Western blot analysis of anti-HLA-A antibody (BM4084). The sample well of each lane was loaded with 30 ug of sample under reducing conditions.

Lane 1: human A549 whole cell lysates,  
Lane 2: human THP-1 whole cell lysates,  
Lane 3: human Jurkat whole cell lysates,  
Lane 4: human Raji whole cell lysates,  
Lane 5: human Daudi whole cell lysates,  
Lane 6: human A431 whole cell lysates,  
Lane 7: human HEL whole cell lysates,  
Lane 8: human RT4 whole cell lysates.

After electrophoresis, proteins were transferred to a membrane. Then the membrane was incubated with rabbit anti-HLA-A antigen affinity purified monoclonal antibody (BM4084) at a dilution of 1:1000 and probed with a goat anti-rabbit IgG-HRP secondary antibody (Catalog # BA1054). The signal is developed using ECL Plus Western Blotting Substrate (Catalog # AR1197). A specific band was detected for HLA-A at approximately 41 kDa. The expected band size for HLA-A is at 41 kDa.



IHC analysis of HLA-A using anti-HLA-A antibody (BM4084). HLA-A was detected in a paraffin-embedded section of human pancreas cancer tissue. The tissue section was incubated with rabbit anti-HLA-A Antibody (BM4084) at a dilution of 1:200 and developed using HRP Conjugated Rabbit IgG Super Vision Assay Kit (Catalog # SV0002) with DAB (Catalog # AR1027) as the chromogen.