

Basic Information

Product Name	Anti-RAF1 Antibody (Clone#BEC-18)	
Gene Name	RAF1	
Source	Rabbit	
Clonality	Monoclonal	
Isotype	IgG	
Species Reactivity	human, mouse, rat	
Tested Application	WB, IHC, ICC/IF	
Contents	500 ug/ml; Rabbit IgG in phosphate buffered saline, pH 7.4, 150mM NaCl, 0.02% sodium azide, 0.4-0.5 mg/ml BSA and 50% glycerol.	
Immunogen	A synthesized peptide derived from human Raf1	
Concentration	500 ug/ml	
Purification	Affinity-chromatography	
Observed MW	73 kDa	
Dilution Ratios	Western blot (WB):	1:500-2000
	Immunohistochemistry (IHC):	1:50-200
	Immunocytochemistry/Immunofluorescence (ICC/IF):	1:50-200

Storage

12 months from date of receipt, -20°C as supplied.

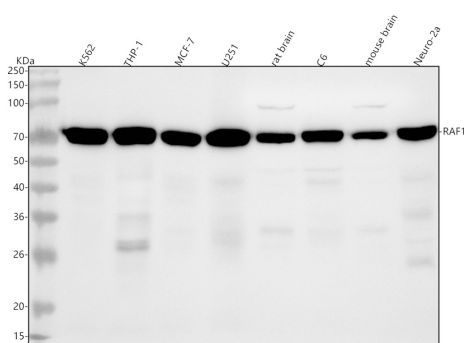
Background Information

RAF proto-oncogene serine/threonine-protein kinase, also known as proto-oncogene c-RAF or simply c-Raf or even Raf-1, is an enzyme that in humans is encoded by the RAF1 gene. This gene is the cellular homolog of viral raf gene (v-raf). The encoded protein is a MAP kinase kinasekinase (MAP3K), which functions downstream of the Ras family of membrane associated GTPases to which it binds directly. Once activated, the cellular RAF1 protein can phosphorylate to activate the dual specificity protein kinases MEK1 and MEK2, which in turn phosphorylate to activate the serine/threonine specific protein kinases, ERK1 and ERK2. Activated ERKs are pleiotropic effectors of cell physiology and play an important role in the control of gene expression involved in the cell division cycle, apoptosis, cell differentiation and cell migration. Mutations in this gene are associated with Noonan syndrome 5 and LEOPARD syndrome 2.

Reference

Anti-RAF1 Antibody (Clone#BEC-18)被引用在3文献中。

Selected Validation Data



Western blot analysis of anti-RAF1 antibody (BM4108). The sample well of each lane was loaded with 30 ug of sample under reducing conditions.

Lane 1: human K562 whole cell lysates,

Lane 2: human THP-1 whole cell lysates,

Lane 3: human MCF-7 whole cell lysates,

Lane 4: human U251 whole cell lysates,

Lane 5: rat brain tissue lysates,

Lane 6: rat C6 whole cell lysates,

Lane 7: mouse brain tissue lysates,

Lane 8: mouse Neuro-2a whole cell lysates.

After electrophoresis, proteins were transferred to a membrane.

Then the membrane was incubated with rabbit anti-RAF1 antigen

affinity purified monoclonal antibody (BM4108) at a dilution of

1:1000 and probed with a goat anti-rabbit IgG-HRP secondary

antibody (Catalog # BA1054). The signal is developed using ECL Plus

Western Blotting Substrate (Catalog # AR1197). A specific band was

detected for RAF1 at approximately 73 kDa. The expected band size

for RAF1 is at 73 kDa.